

LEA Name : Bedford Area SD
Address : 330 E John St
Bedford , PA 15522

County : Bedford
AUN Number : 108051003
LEA Type : SD


**Annual Financial Report
Accuracy Certification Statement**

For Fiscal Year Ending
6/30/2017

Pennsylvania Department of Education
&
Office of Comptroller Operations

PDE-2056: Intermediate Unit
PDE-2057: School District, AVTS/CTC, Charter School,
and Special Program Jointure

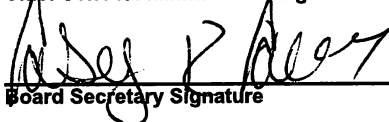
CERTIFICATION: By signing this page I agree that the electronic data submitted is a complete and accurate statement of the financial operations and status of the local education agency for the fiscal year. It has been prepared in accordance with generally accepted accounting principles and established Commonwealth of PA reporting guidelines.



Chief School Administrator Signature

11/21/17

Date



Board Secretary Signature

11/21/17

Date

Christina K Robosson

Contact Person

robossonc@bedfordasd.org

Contact Person E-mail Address

(814)623-4290 Ext :1507

Contact Person Telephone Number

(814)623-4229

Contact Person Fax Number

Audit Certification
Annual Financial Report:
For Fiscal Year Ending **6/30/2017**
(Pursuant to PA School Code Section 218(b))

LEA Name : Bedford Area SD
AUN Number : 108051003
County : Bedford

Audit Certification Due: 12/31/2017


This certification is applicable to the Annual Financial Report data submitted
through the Consolidated Financial Reporting System on: 11-17-2017
Date

Auditing Firm: Ritchey Ritchey and Koontz
336 E Pitt St
Bedford PA 15522

Auditor Contact Name: Aaron Ritchey
Auditor Phone: 814 623 9510
Auditor E-mail: aaron@rrkcpa.com

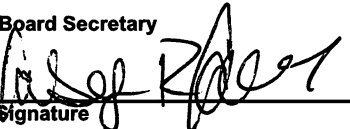
CERTIFICATION: By signing this page I agree that the financial statements of the school have been properly audited as noted above pursuant to Article XXIV, and in the auditor's professional opinion, the Annual Financial Report (PDE-2057) submitted on the date referenced is materially consistent with the audited financial statements.

Chief School Administrator


Signature

11/21/17
Date

Board Secretary


Signature

11/21/17
Date

Christina K Robosson

Contact Person

robossonc@bedfordasd.org

Contact Person E-mail Address

(814)623-4290

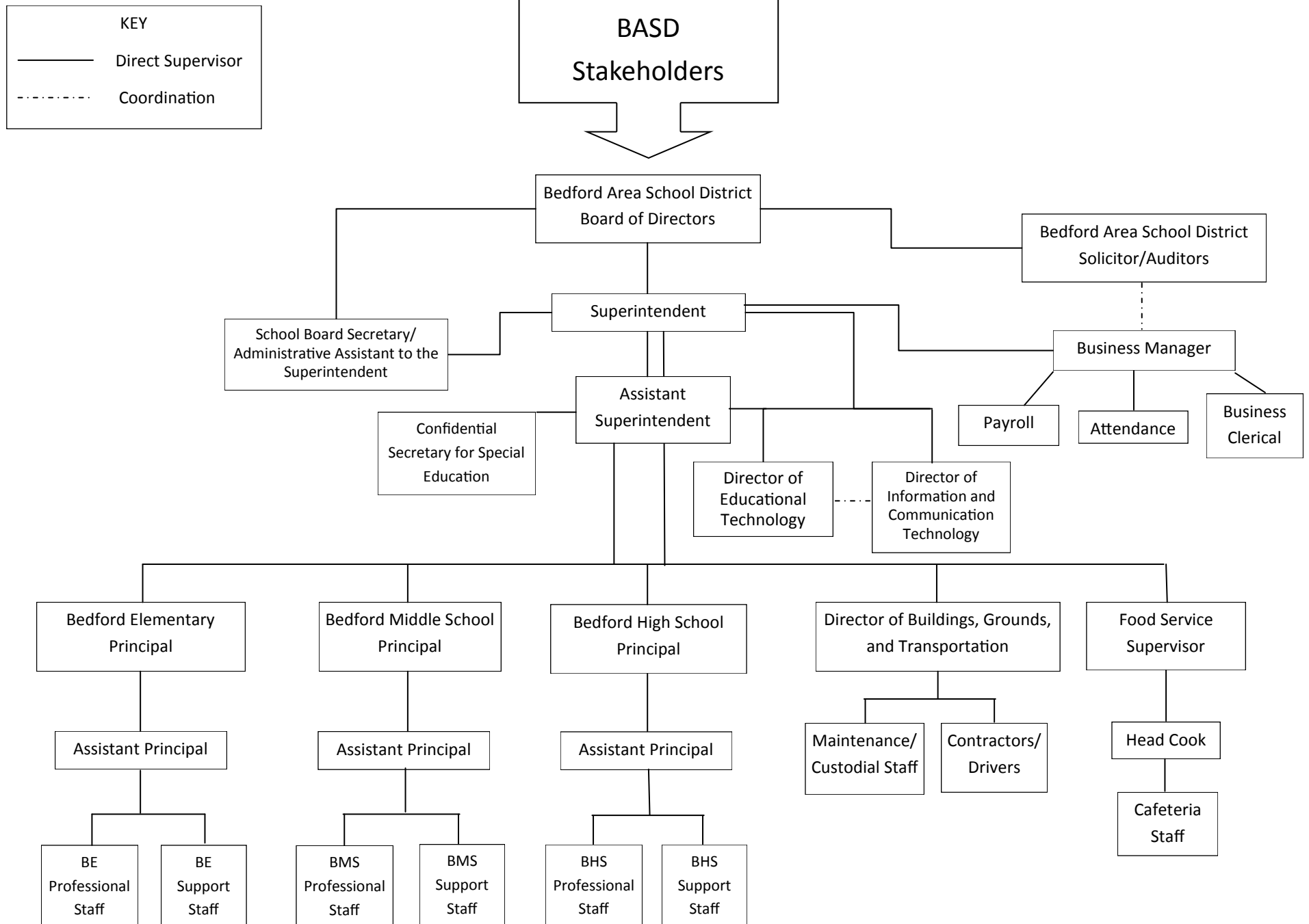
Ext :1507

Contact Person Telephone Number

(814)623-4229

Contact Person Fax Number

BEDFORD AREA SCHOOL DISTRICT ORGANIZATION CHART 2014



<u>Val Number</u>	<u>Description</u>	<u>Justification</u>
30685	Revenue Detail: Current Tax Revenue amount cannot exceed 50% variance from prior year amount. Correct the data or enter a justification. 6153, Current AFR Rev Detail: \$309,572.74 6153, Prior AFR Rev Detail: \$199,808.20	This information is correct. A factory building was sold.
41670	Expenditure Detail, Salaries (Object 100) and Benefits (Object 200 series): Amounts must be entered for both Salaries and Benefits. Function 2900, Object 100: \$0.00 Function 2900, Object 200: \$12,750.00	This expense is for retiree benefits. There is no salary associated.
50430	SESS - 2160 Social Work Services: SESS Schedule amounts for Special Education vary from prior year by 40% or more. Correct the data or enter a justification. SESS Schedule 2160: \$532.30 Prior Year SESS Schedule 2160: \$1,013.31	This amount is correct. We had reduced expenditures.
50450	SESS - 2350 Legal and Accounting Services: SESS Schedule amounts for Special Education vary from prior year by 40% or more. Correct the data or enter a justification. SESS Schedule 2350: \$375.84 Prior Year SESS Schedule 2350: \$1,868.08	This amount is correct. We had reduced expenditures.

LEA : 108051003 Bedford Area SD

Printed 11/21/2017 9:26:43 AM

Amounts Expressed in Whole Dollars		<u>General Fund</u> <u>(10)</u>	<u>Public Purpose Trust</u> <u>(27)</u>	<u>Other Compt Approved</u> <u>(28)</u>	<u>Athletic / Activity</u> <u>(29)</u>	<u>Capital Reserve (690.</u> <u>1850)</u> <u>(31)</u>
Assets And Deferred Outflows Of Resources						
Assets						
0100 Cash and Cash Equivalents		7,243,995			19,229	
0110 Investments						
0120 Taxes Receivable		234,038				
0130 Due From Other Funds		475,106				
0141 Due From Other Governments		1,311,202				
0142 State Revenue Receivable						
0143 Federal Revenue Receivable						
0145 Other Intergovernmental Revenue Receivable						
0146 Due from Primary Government						
0147 Due from Component Unit						
0150 Other Receivables		2,433				
0170 Inventories						
0180 Prepaid Expenses (Expenditures)		2,582				
0190 Other Current Assets						
Total Assets		\$9,269,356			\$19,229	
0910 Deferred Outflows of Resources						
Total Assets And Deferred Outflows Of Resources		\$9,269,356			\$19,229	

LEA : 108051003 Bedford Area SD

Printed 11/21/2017 9:26:43 AM

Amounts Expressed in Whole Dollars		<u>Capital Reserve (1431)</u> <u>(32)</u>	<u>Other Capital Projects</u> <u>Fund</u> <u>(39)</u>	<u>Debt Service</u> <u>(40)</u>	<u>Permanent</u> <u>(90)</u>	<u>Total Governmental</u> <u>Funds</u>
Assets And Deferred Outflows Of Resources						
Assets						
0100	Cash and Cash Equivalents		2,298,349			9,561,573
0110	Investments					
0120	Taxes Receivable					234,038
0130	Due From Other Funds					475,106
0141	Due From Other Governments					1,311,202
0142	State Revenue Receivable					
0143	Federal Revenue Receivable					
0145	Other Intergovernmental Revenue Receivable					
0146	Due from Primary Government					
0147	Due from Component Unit					
0150	Other Receivables					2,433
0170	Inventories					
0180	Prepaid Expenses (Expenditures)					2,582
0190	Other Current Assets					
Total Assets			\$2,298,349			\$11,586,934
0910	Deferred Outflows of Resources					
Total Assets And Deferred Outflows Of Resources			\$2,298,349			\$11,586,934

LEA : 108051003 Bedford Area SD

Printed 11/21/2017 9:26:43 AM

Amounts Expressed in Whole Dollars	<u>General Fund</u> <u>(10)</u>	<u>Public Purpose Trust</u> <u>(27)</u>	<u>Other Compt Approved</u> <u>(28)</u>	<u>Athletic / Activity</u> <u>(29)</u>	<u>Capital Reserve (690.</u> <u>1850)</u> <u>(31)</u>
Liabilities And Deferred Inflows Of Resources And Fund Balances					
Liabilities					
0400 Due to Other Funds				591	
0411 Due to Other Governments					
0412 Due to Primary Government					
0413 Due to Component Unit					
0420 Accounts Payable	2,290,895				
0430 Contracts Payable					
0440 Current Portion of Long-Term Debt					
0450 Short-Term Payables					
0461 Accrued Salaries and Benefits	2,742,569				
0462 Payroll Deductions and Withholding					
0480 Unearned Revenues					
0490 Other Current Liabilities					
Total Liabilities	\$5,033,464			\$591	
0950 Deferred Inflows of Resources					
Fund Balances					
0810 Nonspendable Fund Balance					
0820 Restricted Fund Balance					
0830 Committed Fund Balance	1,933,473			18,638	
0840 Assigned Fund Balance					
0850 Unassigned Fund Balance	2,302,419				
Total Fund Balances	\$4,235,892			\$18,638	
Total Liabilities, Deferred Inflows Of Resources And Fund Balances	\$9,269,356			\$19,229	

LEA : 108051003 Bedford Area SD

Printed 11/21/2017 9:26:43 AM

Amounts Expressed in Whole Dollars		<u>Capital Reserve (1431)</u> <u>(32)</u>	<u>Other Capital Projects</u> <u>Fund</u> <u>(39)</u>	<u>Debt Service</u> <u>(40)</u>	<u>Permanent</u> <u>(90)</u>	<u>Total Governmental</u> <u>Funds</u>
Liabilities And Deferred Inflows Of Resources And Fund Balances						
Liabilities						
0400	Due to Other Funds					591
0411	Due to Other Governments					
0412	Due to Primary Government					
0413	Due to Component Unit					
0420	Accounts Payable					2,290,895
0430	Contracts Payable					
0440	Current Portion of Long-Term Debt					
0450	Short-Term Payables					
0461	Accrued Salaries and Benefits					2,742,569
0462	Payroll Deductions and Withholding					
0480	Unearned Revenues					
0490	Other Current Liabilities					
Total Liabilities						\$5,034,055
0950	Deferred Inflows of Resources					
Fund Balances						
0810	Nonspendable Fund Balance					
0820	Restricted Fund Balance		2,298,349			2,298,349
0830	Committed Fund Balance					1,952,111
0840	Assigned Fund Balance					
0850	Unassigned Fund Balance					2,302,419
Total Fund Balances			\$2,298,349			\$6,552,879
Total Liabilities, Deferred Inflows Of Resources And Fund Balances			\$2,298,349			\$11,586,934

LEA : 108051003 Bedford Area SD

Printed 11/21/2017 9:26:46 AM

Amounts Expressed in Whole Dollars	General Fund (10)	Public Purpose Trust (27)	Other Compt Approved (28)	Athletic / Activity (29)	Capital Reserve (690. 1850) (31)
Revenues					
6000 Revenue from Local Sources	13,855,298			89,615	
7000 Revenue from State Sources	13,958,865				
8000 Revenue from Federal Sources	1,635,871				
Total Revenues	\$29,450,034			\$89,615	
Expenditures					
1000 Instruction	16,791,497				
2000 Support Services	9,375,314				
3000 Operation of Non-Instructional Services	495,809			143,209	
4000 Facilities Acquisition, Construction and Improvement Services					
5110 Debt Service	2,077,256				
5130 Refund of Prior Year Revenues / Receipts	9,042				
Total Expenditures	\$28,748,918			\$143,209	
Excess (Deficiency) Of Revenues Over Expenditures	\$701,116			(\$53,594)	
Other Financing Sources (Uses)					
9110 Face Value of Bonds Issued					
9120 Proceeds from Refunding of Bonds					
9130 Bond Premiums					
9200 Proceeds from Extended-Term Financing					
9300 Interfund Transfers - IN				61,695	
9400 Sale of or Compensation for Loss of Fixed Assets					
9710 Transfers from Component Units					
9720 Transfers from Primary Governments					
9910 Other Financing Sources Not Listed in the 9000 Series					
9990 Insurance Recoveries					
5120 Debt Service – Refunded Bonds					
5150 Bond Discounts					
5200 Interfund Transfers – Out	61,695				
5300 Transfers Out to Component Units/Primary Governments					
Total Other Financing Sources (Uses)	(\$61,695)			\$61,695	

LEA : 108051003 Bedford Area SD

Printed 11/21/2017 9:26:46 AM

Amounts Expressed in Whole Dollars	Capital Reserve (1431) (32)	Other Capital Projects Fund (39)	Debt Service (40)	Permanent (90)	Total Governmental Funds
Revenues					
6000 Revenue from Local Sources		6,204			13,951,117
7000 Revenue from State Sources					13,958,865
8000 Revenue from Federal Sources					1,635,871
Total Revenues		\$6,204			\$29,545,853
Expenditures					
1000 Instruction					16,791,497
2000 Support Services					9,375,314
3000 Operation of Non-Instructional Services					639,018
4000 Facilities Acquisition, Construction and Improvement Services		334,198			334,198
5110 Debt Service					2,077,256
5130 Refund of Prior Year Revenues / Receipts					9,042
Total Expenditures		\$334,198			\$29,226,325
Excess (Deficiency) Of Revenues Over Expenditures		(\$327,994)			\$319,528
Other Financing Sources (Uses)					
9110 Face Value of Bonds Issued					
9120 Proceeds from Refunding of Bonds					
9130 Bond Premiums					
9200 Proceeds from Extended-Term Financing					
9300 Interfund Transfers - IN					61,695
9400 Sale of or Compensation for Loss of Fixed Assets					
9710 Transfers from Component Units					
9720 Transfers from Primary Governments					
9910 Other Financing Sources Not Listed in the 9000 Series					
9990 Insurance Recoveries					
5120 Debt Service – Refunded Bonds					
5150 Bond Discounts					
5200 Interfund Transfers – Out					61,695
5300 Transfers Out to Component Units/Primary Governments					
Total Other Financing Sources (Uses)					\$0

Amounts Expressed in Whole Dollars		<u>General Fund</u> <u>(10)</u>	<u>Public Purpose Trust</u> <u>(27)</u>	<u>Other Compt Approved</u> <u>(28)</u>	<u>Athletic / Activity</u> <u>(29)</u>	<u>Capital Reserve</u> <u>(690.</u> <u>1850)</u> <u>(31)</u>
Special And Extraordinary Items						
9920	Special Items – Gains					
9930	Extraordinary Items – Gains					
5520	Special Items – Losses					
5530	Extraordinary Items – Losses					
Net Change In Fund Balances		\$639,421			\$8,101	
Fund Balance						
0001	Fund Balance - Beginning of Fiscal Year	3,596,470			10,537	
Fund Balance - End Of Year		\$4,235,891			\$18,638	

Amounts Expressed in Whole Dollars		<u>Capital Reserve (1431)</u> <u>(32)</u>	<u>Other Capital Projects</u> <u>Fund</u> <u>(39)</u>	<u>Debt Service</u> <u>(40)</u>	<u>Permanent</u> <u>(90)</u>	<u>Total Governmental</u> <u>Funds</u>
Special And Extraordinary Items						
9920	Special Items – Gains					
9930	Extraordinary Items – Gains					
5520	Special Items – Losses					
5530	Extraordinary Items – Losses					
Net Change In Fund Balances			(\$327,994)			\$319,528
Fund Balance						
0001	Fund Balance - Beginning of Fiscal Year		2,626,343			6,233,350
Fund Balance - End Of Year			\$2,298,349			\$6,552,878

LEA : 108051003 Bedford Area SD

Printed 11/21/2017 9:26:47 AM

Amounts Expressed in Whole Dollars	<u>Food Service</u> <u>(51)</u>	<u>Child Care</u> <u>Operations</u> <u>(52)</u>	<u>Other Enterprise</u> <u>(58)</u>	<u>TOTAL</u>	<u>Internal Service</u> <u>(60)</u>
Assets And Deferred Outflows Of Resources					
Current Assets					
0100 Cash and Cash Equivalents	61,315			61,315	
0110 Investments					
0130 Due From Other Funds	470			470	
0141 Due From Other Governments	10,402			10,402	
0142 State Revenue Receivable					
0143 Federal Revenue Receivable					
0146 Due from Primary Government					
0147 Due from Component Unit					
0150 Other Receivables	2,733			2,733	
0170 Inventories	34,292			34,292	
0180 Prepaid Expenses (Expenditures)					
0190 Other Current Assets					
Total Current Assets	\$109,212			\$109,212	
Noncurrent Assets					
0211 Land					
0212 Site Improvements (Net)					
0220 Buildings and Building Improvements (Net)					
0230 Machinery, Equipment and Furniture (Net)	31,856			31,856	
0250 Construction in Progress					
0260 Long Term Prepayments					
0290 Other Noncurrent Assets					
Total Noncurrent Assets	\$31,856			\$31,856	
0910 Deferred Outflows of Resources					
Total Assets And Deferred Outflows Of Resources	\$141,068			\$141,068	

LEA : 108051003 Bedford Area SD

Printed 11/21/2017 9:26:47 AM

Amounts Expressed in Whole Dollars	<u>Food Service</u> <u>(51)</u>	<u>Child Care</u> <u>Operations</u> <u>(52)</u>	<u>Other Enterprise</u> <u>(58)</u>	<u>TOTAL</u>	<u>Internal Service</u> <u>(60)</u>
Liabilities And Deferred Inflows Of Resources And Net Position					
Current Liabilities					
0400 Due to Other Funds	458,054			458,054	
0411 Due to Other Governments					
0413 Due to Component Unit					
0420 Accounts Payable	2,462			2,462	
0430 Contracts Payable					
0440 Current Portion of Long-Term Debt					
0450 Short-Term Payables					
0461 Accrued Salaries and Benefits	75,671			75,671	
0462 Payroll Deductions and Withholding					
0480 Unearned Revenues	26,391			26,391	
0490 Other Current Liabilities					
Total Current Liabilities	\$562,578			\$562,578	
Noncurrent Liabilities					
0510 Bonds Payable					
0520 Extended-Term Financing Agreements Payable					
0530 Lease-Purchase Obligations					
0540 Accumulated Compensated Absences					
0550 Authority Lease Obligations					
0560 Other Post-Employment Benefits (OPEB)					
0570 Net Pension Liability					
0599 Other Noncurrent Liabilities					
Total Noncurrent Liabilities					
Total Liabilities	\$562,578			\$562,578	
0950 Deferred Inflows of Resources					
Net Position					
0791 Net Investment in Capital Assets	31,856			31,856	
0008 Restricted Net Position (0792 – 0798)					
0799 Unrestricted Net Position	(453,366)			(453,366)	
Total Net Position	(\$421,510)			(\$421,510)	
Total Liabilities And Deferred Inflows Of Resources And Net Position	\$141,068			\$141,068	

Amounts Expressed in Whole Dollars	Food Service (51)	Child Care Operations (52)	Other Enterprise (58)	TOTAL	Internal Service (60)
Operating Revenues					
6600 Food Service Revenue	423,704			423,704	
0071 Charges for Services					
0072 Other Operating Revenue					
Total Operating Revenues	\$423,704			\$423,704	
Operating Expenses					
100 Personnel Services – Salaries	387,728			387,728	
200 Personnel Services – Employee Benefits	342,795			342,795	
300 Purchased Professional and Technical Services					
400 Purchased Property Services	7,756			7,756	
500 Other Purchased Services	3,366			3,366	
600 Supplies	473,311			473,311	
740 Depreciation	6,615			6,615	
810 Dues and Fees					
890 Miscellaneous Expenditures	1,985			1,985	
Total Operating Expenses	\$1,223,556			\$1,223,556	
Operating Income (Loss)	(\$799,852)			(\$799,852)	
Non Operating Revenues (Expenses)					
6500 Earnings on Investments					
6920 Contributions and Donations from Private Sources					
6930 Gains or Losses on Sale of Fixed Assets					
6991 Refunds of a Prior Year Expenditure					
7000 Revenue from State Sources	108,612			108,612	
8000 Revenue from Federal Sources	605,361			605,361	
820 Claims and Judgments Against the LEA					
830 Interest					
TOTAL Non Operating Revenues (Expenses)	\$713,973			\$713,973	
Income (Loss) Before Contributions And Transfers	(\$85,879)			(\$85,879)	

Amounts Expressed in Whole Dollars	<u>Food Service</u> (51)	<u>Child Care Operations</u> (52)	<u>Other Enterprise</u> (58)	<u>TOTAL</u>	<u>Internal Service</u> (60)
Contributions, Transfers, and Special and Extraordinary Items					
5200 Interfund Transfers – Out					
5300 Transfers Out to Component Units/Primary Governments					
5520 Special Items – Losses					
5530 Extraordinary Items – Losses					
9300 Interfund Transfers - IN					
9500 Capital Contributions					
9700 Transfers IN From Component Units/Primary Governments					
9920 Special Items – Gains					
9930 Extraordinary Items – Gains					
Change In Net Position	(\$85,879)			(\$85,879)	
0002 Net Position - Beginning of Fiscal Year	(335,631)			(335,631)	
0003 Accounting Changes / Residual Equity Transfers					
Net Position - End Of Year	(\$421,510)			(\$421,510)	

LEA : 108051003 Bedford Area SD

Printed 11/21/2017 9:26:51 AM

Amounts Expressed in Whole Dollars	Food Service (51)	Child Care Operations (52)	Other Enterprise (58)	TOTAL	Internal Service(60)
Cash Flows From Operating Activities					
0011 Cash Receipts From Users	422,015			422,015	
0012 Cash Receipts From Assessments Made to Other Funds					
0013 Cash Receipts From Earnings on Investments					
0014 Cash Receipts From Other Operating Revenue					
0015 Cash Payments To Employees For Services	704,667			704,667	
0016 Cash Payments For Insurance Claims					
0017 Cash Payments To Suppliers For Goods and Services	478,698			478,698	
0018 Cash Payments For Other Operating Expenses	1,985			1,985	
Net Cash Provided By (Used For) Operating Activities	(\$763,335)			(\$763,335)	
Cash Flows From Non-Capital Financing Activities					
0021 Receipts From Local Sources - 6000					
0022 Receipts From State Sources - 7000	108,599			108,599	
0023 Receipts From Federal Sources -8000	608,268			608,268	
0024 Notes and Loans Received (Repaid)					
0025 Interest Paid on Notes/Loans - 5100-830					
0026 Operating Transfers In (Out)/Residual Equity Trans					
0027 Operating Transfers In (Out) Primary Government / Comp Unit					
0028 Receipts From Refund of Prior Year Expenditures - 6991					
0029 Special and Extraordinary Gains (losses)					
Net Cash Prov By (Used for) Non-Capital Financing Activities	\$716,867			\$716,867	
Cash Flows From Capital and Related Financing Activities					
0031 Payments For Fac Acq, Const, and Imp - 4000					
0032 Gain / (Loss) on Sale of Fixed Assets - 6930					
0033 Proceeds From Extended Term Financing - 9200					
0034 Principal Paid on Financing Agreements					
0035 Interest Paid on Financing Agreements - 5100-830					
0036 (Inc) Dec in Contributed Capital					
Net Cash Prov By (Used for) Capital and Related Financing Activities					
Cash Flows From Investing Activities					
0041 Earnings on Investments - 6500					
0042 Purchase of Inv Securities / Deposits to Inv Pools					
0043 Receipts From Investment Pool Withdrawals					
0044 Proceeds from Sale and Maturity of Inv Securities					
0045 Loans Received (Paid)					
Net Cash Prov By (Used for) Investing Activities					

LEA : 108051003 Bedford Area SD

Printed 11/21/2017 9:26:51 AM

	Food Service (51)	Child Care Operations (52)	Other Enterprise (58)	TOTAL	Internal Service (60)
Net Increase (Decrease) in Cash Flows	(46,468)			(46,468)	
0004 Cash and Cash Equivalents Beginning of Year	107,783			107,783	
Cash and Cash Equivalents at Year End	\$61,315			\$61,315	
Reconciliation of Operating Income (Loss) To Net Cash Provided by (Used For) Operating Activities					
0005 Operating Income (Loss) per REP	(799,852)			(799,852)	
Adjustments					
0051 Depreciation and Net Amortization	6,615			6,615	
0052 Provision for Uncollectible Accounts					
0053 Other Adjustments					
Effect of Changes in Assets, Liabilities, Deferred Outflows and Deferred Inflows					
0054 (Inc) Dec In Accounts Receivable (0120-0150)	(1,111)			(1,111)	
0055 Advances to Other Funds (0160)					
0056 (Inc) Dec in Inventories (0170)	3,273			3,273	
0057 (Inc) Dec in Prepaid Expenses (0180)					
0058 (Inc) Dec in Other Current or Noncurrent Assets					
0064 Deferred Outflows (0910)					
0059 Inc (Dec) in Accounts Payable (0400-0450)	34,118			34,118	
0060 Inc (Dec) in Accrued Salaries/Benefits (0461)	(5,799)			(5,799)	
0065 Inc (Dec) in Net Pension Liabilities (0570)					
0066 Inc (Dec) in Other Postemp Benefit Oblig (0560)					
0061 Inc (Dec) in Payroll Deductions/Withholding (0462)					
0062 Inc (Dec) in Unearned Revenue (0480)					
0063 Inc (Dec) in Other Current or Noncurrent Liabilities	(579)			(579)	
0067 Deferred Inflows (0950)					
Total Adjustments	\$36,517			\$36,517	
Cash Provided By (Used for) Total	(\$763,335)			(\$763,335)	

COMBINED STATEMENT OF CASH FLOWS
SCHEDULE OF NONCASH INVESTING, CAPITAL, AND FINANCING ACTIVITIES

Explanation of Transaction and Balance Sheet Effect	Amount
Total	

LEA : 108051003 Bedford Area SD

Printed 11/21/2017 9:26:52 AM

Amounts Expressed in Whole Dollars	<u>Private Purpose Trust</u> <u>(71)</u>	<u>Investment Trust</u> <u>(72)</u>	<u>Pension Trust</u> <u>(73)</u>	<u>Activity</u> <u>(81)</u>
Assets And Deferred Outflows Of Resources				
Assets				
0100 Cash and Cash Equivalents				104,865
0110 Investments				
0130 Due From Other Funds				
0147 Due from Component Unit				
0150 Other Receivables				
0170 Inventories				
0180 Prepaid Expenses (Expenditures)				
0190 Other Current Assets				
0220 Buildings and Building Improvements (Net)				
0230 Machinery, Equipment and Furniture (Net)				
Total Assets				\$104,865
0910 Deferred Outflows of Resources				
Total Assets And Deferred Outflows Of Resources				\$104,865

LEA : 108051003 Bedford Area SD

Printed 11/21/2017 9:26:52 AM

Amounts Expressed in Whole Dollars	<u>Other Agency</u> <u>(89)</u>	<u>Discrete Component Units</u> <u>(98)</u>	<u>Discrete Component Units</u> <u>(99)</u>	<u>Total Fiduciary Funds</u>
Assets And Deferred Outflows Of Resources				
Assets				
0100 Cash and Cash Equivalents	2,332			107,197
0110 Investments				
0130 Due From Other Funds				
0147 Due from Component Unit				
0150 Other Receivables				
0170 Inventories				
0180 Prepaid Expenses (Expenditures)				
0190 Other Current Assets				
0220 Buildings and Building Improvements (Net)				
0230 Machinery, Equipment and Furniture (Net)				
Total Assets	\$2,332			\$107,197
0910 Deferred Outflows of Resources				
Total Assets And Deferred Outflows Of Resources	\$2,332			\$107,197

LEA : 108051003 Bedford Area SD

Printed 11/21/2017 9:26:52 AM

Amounts Expressed in Whole Dollars	<u>Private Purpose Trust</u> <u>(71)</u>	<u>Investment Trust</u> <u>(72)</u>	<u>Pension Trust</u> <u>(73)</u>	<u>Activity</u> <u>(81)</u>
Liabilities, Deferred Inflows Of Resources And Net Position				
Liabilities				
0400 Due to Other Funds				
0411 Due to Other Governments				
0412 Due to Primary Government				
0413 Due to Component Unit				
0420 Accounts Payable				104,865
0430 Contracts Payable				
0450 Short-Term Payables				
0461 Accrued Salaries and Benefits				
0462 Payroll Deductions and Withholding				
0480 Unearned Revenues				
0490 Other Current Liabilities				
Total Liabilities				\$104,865
0950 Deferred Inflows of Resources				
Net Position				
0791 Net Investment in Capital Assets				
0009 Restricted Net Position (0792 – 0798)				
0799 Unrestricted Net Position				
Total Net Position				
Total Liabilities, Deferred Inflows Of Resources And Net Position				\$104,865

LEA : 108051003 Bedford Area SD

Printed 11/21/2017 9:26:52 AM

Amounts Expressed in Whole Dollars		<u>Other Agency</u> <u>(89)</u>	<u>Discrete Component Units</u> <u>(98)</u>	<u>Discrete Component Units</u> <u>(99)</u>	<u>Total Fiduciary Funds</u>
Liabilities, Deferred Inflows Of Resources And Net Position					
Liabilities					
0400	Due to Other Funds				
0411	Due to Other Governments				
0412	Due to Primary Government				
0413	Due to Component Unit				
0420	Accounts Payable	2,332			107,197
0430	Contracts Payable				
0450	Short-Term Payables				
0461	Accrued Salaries and Benefits				
0462	Payroll Deductions and Withholding				
0480	Unearned Revenues				
0490	Other Current Liabilities				
Total Liabilities		\$2,332			\$107,197
0950	Deferred Inflows of Resources				
Net Position					
0791	Net Investment in Capital Assets				
0009	Restricted Net Position (0792 – 0798)				
0799	Unrestricted Net Position				
Total Net Position					
Total Liabilities, Deferred Inflows Of Resources And Net Position		\$2,332			\$107,197

	Revenue Reported In Current Year	Current Year Tax Accrual	Prior Year Tax Accrual	Taxes Collected In Current Year
Revenue from Local Sources				
6111 Current Real Estate Taxes	9,115,737.29		1,105.97	9,116,843.26
6112 Interim Real Estate Taxes	1,772.83		4,879.54	6,652.37
6113 Public Utility Realty Taxes	13,421.55			13,421.55
6114 Payments in Lieu of Current Taxes - State / Local	28,752.12			28,752.12
6120 Current Per Capita Taxes, Section 679	43,311.30		14.70	43,326.00
6131 Current Act 1 Earned Income Taxes	1,383,085.00	41,219.59	54,924.60	1,396,790.01
6141 Current Act 511 Per Capita Taxes	43,311.30		14.70	43,326.00
6143 Current Act 511 Local Services Taxes	94,042.22	648.75	2,868.79	96,262.26
6151 Current Act 511 Earned Income Taxes	1,477,657.18	41,191.17	54,882.03	1,491,348.04
6153 Current Act 511 Real Estate Transfer Taxes	312,860.61	27,453.51	24,165.64	309,572.74
6411 Delinquent Real Estate Taxes	426,352.78	156,209.94	166,457.71	436,600.55
6440 Delinquent Local Enabling Taxes - Flat Rate Assessments	2,804.03		920.28	3,724.31
6500 Earnings on Investments	40,742.63			
6829 State Revenue Received from Other Sources	3,889.77			
6831 Federal Revenue Received from Other Pennsylvania Public LEAs	78,855.86			
6832 Federal IDEA Revenue Received as Pass Through	333,310.94			
6839 Federal Revenue Received from Other Sources	4,369.06			
6910 Rentals	34,423.43			
6920 Contributions and Donations from Private Sources	15,151.87			
6941 Regular Day School Tuition	196,543.04			
6942 Summer School Tuition	2,000.00			
6944 Receipts from Other LEAs in Pennsylvania - Education	40,200.94			
6969 All Other Services Provided Other Governments	49,193.91			
6991 Refunds of a Prior Year Expenditure	13,549.02			
6999 Other Revenues Not Specified Above	99,959.61			
TOTAL Revenue from Local Sources	\$13,855,298.29	\$266,722.96	\$310,233.96	\$12,986,619.21

	Revenue Reported In Current Year			
Revenue from State Sources				
7110 Basic Education Funding	7,472,199.92			
7160 Tuition for Orphans Subsidy	69,391.42			
7271 Special Education funds for School-Aged Pupils	1,326,201.97			
7292 Pre-K Counts	136,283.36			
7311 Pupil Transportation Subsidy	1,360,244.59			
7312 Nonpublic and Charter School Pupil Transportation Subsidy	102,025.00			
7320 Rental and Sinking Fund Payments / Building Reimbursement Subsidy	780,488.52			
7330 Health Services (Medical, Dental, Nurse, Act 25)	34,267.12			
7340 State Property Tax Reduction Allocation	651,834.82			
7505 Ready to Learn Block Grant	328,163.00			
7810 State Share of Social Security and Medicare Taxes	296,463.62			
7820 State Share of Retirement Contributions	1,401,301.29			
TOTAL Revenue from State Sources	\$13,958,864.63			

	Revenue Reported In Current Year			
<u>Revenue from Federal Sources</u>				
8514 NCLB, Title I - Improving the Academic Achievement of the Disadvantaged	822,475.35			
8515 NCLB, Title II - Preparing, Training and Recruiting High Quality Teachers and Principals	105,300.91			
8517 NCLB, Title IV - 21St Century Schools	643,589.22			
8690 Other Restricted Federal Grants-in-Aid Through the Commonwealth of PA	5,462.18			
8810 School-Based Access Medicaid Reimbursement Program (SBAP) Reimbursements (Access)	54,548.78			
8820 Medical Assistance Reimbursement for Administrative Claiming (Quarterly) Program	4,494.89			
TOTAL Revenue from Federal Sources	\$1,635,871.33			
TOTAL FROM ALL SOURCES	\$29,450,034.25	\$266,722.96	\$310,233.96	\$12,986,619.21

Revenue from Local Sources	13,855,298.29
Revenue from State Sources	13,958,864.63
Revenue from Federal Sources	1,635,871.33
Other Financing Sources	
TOTAL FROM ALL SOURCES	\$29,450,034.25

LEA : 108051003 Bedford Area SD

Printed 11/21/2017 9:26:56 AM

General Fund (10)

1000 Instruction	Total
100 <u>Personnel Services – Salaries</u>	
100 Personnel Services – Salaries	7,245,992.21
Total Personnel Services – Salaries	\$7,245,992.21
200 <u>Personnel Services – Employee Benefits</u>	
210 Group Insurance – Contracted Provider	1,709,113.86
220 Social Security Contributions	540,061.20
230 PSERS Retirement Contributions	2,152,215.20
250 Unemployment Compensation	527.60
260 Workers’ Compensation	48,545.05
292 Health Savings Accounts	216,056.11
Total Personnel Services – Employee Benefits	\$4,666,519.02
300 <u>Purchased Professional and Technical Services</u>	
322 Professional Educational Services – Ius	601,226.77
323 Professional Educational Services – Other Educational Agencies	50,554.99
329 Professional Educational Services – Other	554,864.20
330 Other Professional Services	4,724.00
Total Purchased Professional and Technical Services	\$1,211,369.96
400 <u>Purchased Property Services</u>	
430 Repairs and Maintenance Services	(175.00)
440 Rentals	30,004.53
Total Purchased Property Services	\$29,829.53
500 <u>Other Purchased Services</u>	
530 Communications	649.99
561 Tuition To Other School Districts Within the State	199,422.77
562 Tuition To Pennsylvania Charter Schools	2,524,456.57
564 Tuition To Career and Technology Centers	515,621.75
567 Tuition To Approved Private Schools (APS) and PA Chartered Schools for the Deaf and Blind	6,731.67
580 Travel	1,945.14
594 IU Payment By Withholding for Institutionalized Children’s Programs – Special Classes	591.85
Total Other Purchased Services	\$3,249,419.74
600 <u>Supplies</u>	
610 General Supplies	283,325.59
620 Energy	190.40
630 Food	3,550.50
640 Books and Periodicals	39,056.51
650 Supplies & Fees – Technology Related	38,272.16
Total Supplies	\$364,395.16
700 <u>Property</u>	
752 Capital Equipment – Original and Additional	5,786.03
756 Capitalized Technology Hardware and Equipment – Original	7,344.90
762 Capitalized Equipment - Replacement	1,772.20
766 Capitalized Technology Hardware and Equipment – Replacement	1,824.00
768 Capitalized Technology Software - Replacement	6,591.53

LEA : 108051003 Bedford Area SD

Printed 11/21/2017 9:26:56 AM

General Fund (10)

1000 Instruction	<u>Total</u>
Total Property	\$23,318.66
800 <u>Other Objects</u>	
810 Dues and Fees	653.00
Total Other Objects	\$653.00
Total 1000 Instruction	\$16,791,497.28

LEA : 108051003 Bedford Area SD

Printed 11/21/2017 9:26:56 AM

General Fund (10)				
1100 Regular Programs – Elementary / Secondary	<u>Elementary</u>	<u>Secondary</u>	<u>Federal</u>	<u>Total</u>
100 <u>Personnel Services – Salaries</u>				
100 Personnel Services – Salaries	2,856,712.88	2,498,819.70	346,788.96	5,702,321.54
Total Personnel Services – Salaries	\$2,856,712.88	\$2,498,819.70	\$346,788.96	\$5,702,321.54
200 <u>Personnel Services – Employee Benefits</u>				
210 Group Insurance – Contracted Provider	672,295.40	524,743.65	72,434.02	1,269,473.07
220 Social Security Contributions	214,822.44	187,853.15	25,938.32	428,613.91
230 PSERS Retirement Contributions	854,829.90	736,148.67	103,851.03	1,694,829.60
250 Unemployment Compensation	329.90	197.70		527.60
260 Workers' Compensation	19,139.89	16,742.16	2,323.15	38,205.20
292 Health Savings Accounts	79,170.00	63,780.00	8,850.00	151,800.00
Total Personnel Services – Employee Benefits	\$1,840,587.53	\$1,529,465.33	\$213,396.52	\$3,583,449.38
300 <u>Purchased Professional and Technical Services</u>				
323 Professional Educational Services – Other Educational Agencies			9,590.00	9,590.00
329 Professional Educational Services – Other			246,585.22	246,585.22
Total Purchased Professional and Technical Services			\$256,175.22	\$256,175.22
400 <u>Purchased Property Services</u>				
440 Rentals	18,791.89	6,432.56	2,492.58	27,717.03
Total Purchased Property Services	\$18,791.89	\$6,432.56	\$2,492.58	\$27,717.03
500 <u>Other Purchased Services</u>				
530 Communications	30.21	74.71		104.92
562 Tuition To Pennsylvania Charter Schools	1,072,110.02	1,072,110.02		2,144,220.04
580 Travel	9.00			9.00
Total Other Purchased Services	\$1,072,149.23	\$1,072,184.73		\$2,144,333.96
600 <u>Supplies</u>				
610 General Supplies	53,028.91	43,948.96	171,101.78	268,079.65
640 Books and Periodicals	7,725.30	403.08	30,498.89	38,627.27
650 Supplies & Fees – Technology Related	10,384.80	3,988.20	15,821.19	30,194.19
Total Supplies	\$71,139.01	\$48,340.24	\$217,421.86	\$336,901.11
700 <u>Property</u>				
752 Capital Equipment – Original and Additional	1,817.20	2,098.00		3,915.20
756 Capitalized Technology Hardware and Equipment – Original			7,344.90	7,344.90
762 Capitalized Equipment - Replacement		1,772.20		1,772.20
Total Property	\$1,817.20	\$3,870.20	\$7,344.90	\$13,032.30
800 <u>Other Objects</u>				
810 Dues and Fees		653.00		653.00
Total Other Objects		\$653.00		\$653.00
Total 1100 Regular Programs – Elementary / Secondary	\$5,861,197.74	\$5,159,765.76	\$1,043,620.04	\$12,064,583.54

LEA : 108051003 Bedford Area SD

Printed 11/21/2017 9:26:56 AM

General Fund (10)

1110 Regular Programs

	Elementary	Secondary	Federal	Total
100 <u>Personnel Services – Salaries</u>				
100 Personnel Services – Salaries	2,856,712.88	2,498,819.70		5,355,532.58
Total Personnel Services – Salaries	\$2,856,712.88	\$2,498,819.70		\$5,355,532.58
200 <u>Personnel Services – Employee Benefits</u>				
210 Group Insurance – Contracted Provider	672,295.40	524,743.65		1,197,039.05
220 Social Security Contributions	214,822.44	187,853.15		402,675.59
230 PSERS Retirement Contributions	854,829.90	736,148.67		1,590,978.57
250 Unemployment Compensation	329.90	197.70		527.60
260 Workers' Compensation	19,139.89	16,742.16		35,882.05
292 Health Savings Accounts	79,170.00	63,780.00		142,950.00
Total Personnel Services – Employee Benefits	\$1,840,587.53	\$1,529,465.33		\$3,370,052.86
400 <u>Purchased Property Services</u>				
440 Rentals	18,791.89	6,432.56	2,492.58	27,717.03
Total Purchased Property Services	\$18,791.89	\$6,432.56	\$2,492.58	\$27,717.03
500 <u>Other Purchased Services</u>				
530 Communications	30.21	74.71		104.92
562 Tuition To Pennsylvania Charter Schools	1,072,110.02	1,072,110.02		2,144,220.04
580 Travel	9.00			9.00
Total Other Purchased Services	\$1,072,149.23	\$1,072,184.73		\$2,144,333.96
600 <u>Supplies</u>				
610 General Supplies	53,028.91	43,948.96		96,977.87
640 Books and Periodicals	7,725.30	403.08		8,128.38
650 Supplies & Fees – Technology Related	10,384.80	3,988.20		14,373.00
Total Supplies	\$71,139.01	\$48,340.24		\$119,479.25
700 <u>Property</u>				
752 Capital Equipment – Original and Additional	1,817.20	2,098.00		3,915.20
762 Capitalized Equipment - Replacement		1,772.20		1,772.20
Total Property	\$1,817.20	\$3,870.20		\$5,687.40
800 <u>Other Objects</u>				
810 Dues and Fees		653.00		653.00
Total Other Objects		\$653.00		\$653.00
Total 1110 Regular Programs	\$5,861,197.74	\$5,159,765.76	\$2,492.58	\$11,023,456.08

LEA : 108051003 Bedford Area SD

Printed 11/21/2017 9:26:56 AM

General Fund (10)				
1190 Federally-Funded Regular Programs	<u>Elementary</u>	<u>Secondary</u>	<u>Federal</u>	<u>Total</u>
100 <u>Personnel Services – Salaries</u>				
100 Personnel Services – Salaries			346,788.96	346,788.96
Total Personnel Services – Salaries			\$346,788.96	\$346,788.96
200 <u>Personnel Services – Employee Benefits</u>				
210 Group Insurance – Contracted Provider			72,434.02	72,434.02
220 Social Security Contributions			25,938.32	25,938.32
230 PSERS Retirement Contributions			103,851.03	103,851.03
260 Workers' Compensation			2,323.15	2,323.15
292 Health Savings Accounts			8,850.00	8,850.00
Total Personnel Services – Employee Benefits			\$213,396.52	\$213,396.52
300 <u>Purchased Professional and Technical Services</u>				
323 Professional Educational Services – Other Educational Agencies			9,590.00	9,590.00
329 Professional Educational Services – Other			246,585.22	246,585.22
Total Purchased Professional and Technical Services			\$256,175.22	\$256,175.22
600 <u>Supplies</u>				
610 General Supplies			171,101.78	171,101.78
640 Books and Periodicals			30,498.89	30,498.89
650 Supplies & Fees – Technology Related			15,821.19	15,821.19
Total Supplies			\$217,421.86	\$217,421.86
700 <u>Property</u>				
756 Capitalized Technology Hardware and Equipment – Original			7,344.90	7,344.90
Total Property			\$7,344.90	\$7,344.90
Total 1190 Federally-Funded Regular Programs			\$1,041,127.46	\$1,041,127.46

LEA : 108051003 Bedford Area SD

Printed 11/21/2017 9:26:56 AM

General Fund (10)				
1200 Special Programs – Elementary / Secondary	<u>Elementary</u>	<u>Secondary</u>	<u>Federal</u>	<u>Total</u>
100 <u>Personnel Services – Salaries</u>				
100 Personnel Services – Salaries	466,554.86	517,018.89	165,616.04	1,149,189.79
Total Personnel Services – Salaries	\$466,554.86	\$517,018.89	\$165,616.04	\$1,149,189.79
200 <u>Personnel Services – Employee Benefits</u>				
210 Group Insurance – Contracted Provider	147,465.56	163,449.90	31,873.29	342,788.75
220 Social Security Contributions	33,052.51	36,912.96	11,927.82	81,893.29
230 PSERS Retirement Contributions	142,950.13	168,958.13	28,729.15	340,637.41
260 Workers' Compensation	3,125.32	3,463.09	1,108.55	7,696.96
292 Health Savings Accounts	21,378.61	23,227.50	7,650.00	52,256.11
Total Personnel Services – Employee Benefits	\$347,972.13	\$396,011.58	\$81,288.81	\$825,272.52
300 <u>Purchased Professional and Technical Services</u>				
322 Professional Educational Services – lus	178,458.25	263,433.28		441,891.53
323 Professional Educational Services – Other Educational Agencies	600.00	408.49		1,008.49
329 Professional Educational Services – Other	123,996.43	99,530.55		223,526.98
330 Other Professional Services	612.50	612.50		1,225.00
Total Purchased Professional and Technical Services	\$303,667.18	\$363,984.82		\$667,652.00
500 <u>Other Purchased Services</u>				
561 Tuition To Other School Districts Within the State	65,526.25	92,776.89		158,303.14
562 Tuition To Pennsylvania Charter Schools	190,118.26	190,118.27		380,236.53
567 Tuition To Approved Private Schools (APS) and PA Chartered Schools for the Deaf and Blind		6,731.67		6,731.67
580 Travel		1,036.33		1,036.33
594 IU Payment By Withholding for Institutionalized Children's Programs – Special Classes		591.85		591.85
Total Other Purchased Services	\$255,644.51	\$291,255.01		\$546,899.52
600 <u>Supplies</u>				
610 General Supplies	1,188.42	2,900.09		4,088.51
640 Books and Periodicals	19.32	41.07		60.39
650 Supplies & Fees – Technology Related	119.00	2,881.00		3,000.00
Total Supplies	\$1,326.74	\$5,822.16		\$7,148.90
700 <u>Property</u>				
766 Capitalized Technology Hardware and Equipment – Replacement	1,824.00			1,824.00
Total Property	\$1,824.00			\$1,824.00
Total 1200 Special Programs – Elementary / Secondary	\$1,376,989.42	\$1,574,092.46	\$246,904.85	\$3,197,986.73

LEA : 108051003 Bedford Area SD

Printed 11/21/2017 9:26:56 AM

General Fund (10)				
1210 Life Skills Support	<u>Elementary</u>	<u>Secondary</u>	<u>Federal</u>	<u>Total</u>
100 <u>Personnel Services – Salaries</u>				
100 Personnel Services – Salaries	121,763.86	37,573.15	17,023.40	176,360.41
Total Personnel Services – Salaries	\$121,763.86	\$37,573.15	\$17,023.40	\$176,360.41
200 <u>Personnel Services – Employee Benefits</u>				
210 Group Insurance – Contracted Provider	48,126.71	12,215.29	6,117.86	66,459.86
220 Social Security Contributions	8,426.35	2,790.88	1,013.37	12,230.60
230 PSERS Retirement Contributions	36,056.68	11,159.96	5,089.24	52,305.88
260 Workers' Compensation	815.85	251.66	114.03	1,181.54
292 Health Savings Accounts	8,400.00	1,800.00	2,490.00	12,690.00
Total Personnel Services – Employee Benefits	\$101,825.59	\$28,217.79	\$14,824.50	\$144,867.88
300 <u>Purchased Professional and Technical Services</u>				
323 Professional Educational Services – Other Educational Agencies		408.49		408.49
329 Professional Educational Services – Other		148.05		148.05
Total Purchased Professional and Technical Services		\$556.54		\$556.54
500 <u>Other Purchased Services</u>				
561 Tuition To Other School Districts Within the State	31,344.41	59,644.72		90,989.13
Total Other Purchased Services	\$31,344.41	\$59,644.72		\$90,989.13
600 <u>Supplies</u>				
610 General Supplies	534.01	537.48		1,071.49
640 Books and Periodicals	19.32	41.07		60.39
Total Supplies	\$553.33	\$578.55		\$1,131.88
700 <u>Property</u>				
766 Capitalized Technology Hardware and Equipment – Replacement	1,824.00			1,824.00
Total Property	\$1,824.00			\$1,824.00
Total 1210 Life Skills Support	\$257,311.19	\$126,570.75	\$31,847.90	\$415,729.84

LEA : 108051003 Bedford Area SD

Printed 11/21/2017 9:26:56 AM

General Fund (10)				
1220 Sensory Support	<u>Elementary</u>	<u>Secondary</u>	<u>Federal</u>	<u>Total</u>
100 <u>Personnel Services – Salaries</u>				
100 Personnel Services – Salaries	43,069.56	42,463.66	34,031.10	119,564.32
Total Personnel Services – Salaries	\$43,069.56	\$42,463.66	\$34,031.10	\$119,564.32
200 <u>Personnel Services – Employee Benefits</u>				
210 Group Insurance – Contracted Provider	4,701.76	4,700.88	9,321.20	18,723.84
220 Social Security Contributions	3,204.05	3,157.89	2,428.72	8,790.66
230 PSERS Retirement Contributions	15,657.55	15,068.60	5,086.69	35,812.84
260 Workers' Compensation	287.85	284.09	226.98	798.92
292 Health Savings Accounts	525.00	525.00	1,050.00	2,100.00
Total Personnel Services – Employee Benefits	\$24,376.21	\$23,736.46	\$18,113.59	\$66,226.26
300 <u>Purchased Professional and Technical Services</u>				
322 Professional Educational Services – lus	78,668.14	20,080.28		98,748.42
330 Other Professional Services	612.50	612.50		1,225.00
Total Purchased Professional and Technical Services	\$79,280.64	\$20,692.78		\$99,973.42
600 <u>Supplies</u>				
610 General Supplies	276.95			276.95
Total Supplies	\$276.95			\$276.95
Total 1220 Sensory Support	\$147,003.36	\$86,892.90	\$52,144.69	\$286,040.95

LEA : 108051003 Bedford Area SD

Printed 11/21/2017 9:26:56 AM

General Fund (10)				
1230 Emotional Support	<u>Elementary</u>	<u>Secondary</u>	<u>Federal</u>	<u>Total</u>
100 <u>Personnel Services – Salaries</u>				
100 Personnel Services – Salaries			48,433.91	48,433.91
Total Personnel Services – Salaries			\$48,433.91	\$48,433.91
200 <u>Personnel Services – Employee Benefits</u>				
210 Group Insurance – Contracted Provider			6,656.06	6,656.06
220 Social Security Contributions			3,597.07	3,597.07
230 PSERS Retirement Contributions	3,636.22	3,636.14	7,272.36	14,544.72
260 Workers' Compensation			324.48	324.48
292 Health Savings Accounts			1,050.00	1,050.00
Total Personnel Services – Employee Benefits	\$3,636.22	\$3,636.14	\$18,899.97	\$26,172.33
300 <u>Purchased Professional and Technical Services</u>				
322 Professional Educational Services – lus	92,171.32	148,834.05		241,005.37
329 Professional Educational Services – Other	118,276.43	98,083.12		216,359.55
Total Purchased Professional and Technical Services	\$210,447.75	\$246,917.17		\$457,364.92
600 <u>Supplies</u>				
610 General Supplies		43.94		43.94
Total Supplies		\$43.94		\$43.94
Total 1230 Emotional Support	\$214,083.97	\$250,597.25	\$67,333.88	\$532,015.10

LEA : 108051003 Bedford Area SD

Printed 11/21/2017 9:26:56 AM

General Fund (10)				
1240 Academic Support	<u>Elementary</u>	<u>Secondary</u>	<u>Federal</u>	<u>Total</u>
100 <u>Personnel Services – Salaries</u>				
100 Personnel Services – Salaries	301,721.44	357,542.57	66,127.63	725,391.64
Total Personnel Services – Salaries	\$301,721.44	\$357,542.57	\$66,127.63	\$725,391.64
200 <u>Personnel Services – Employee Benefits</u>				
210 Group Insurance – Contracted Provider	94,637.09	115,733.33	9,778.17	220,148.59
220 Social Security Contributions	21,422.11	25,500.55	4,888.66	51,811.32
230 PSERS Retirement Contributions	87,599.68	115,253.01	11,280.86	214,133.55
260 Workers' Compensation	2,021.62	2,395.16	443.06	4,859.84
292 Health Savings Accounts	12,453.61	15,802.50	3,060.00	31,316.11
Total Personnel Services – Employee Benefits	\$218,134.11	\$274,684.55	\$29,450.75	\$522,269.41
300 <u>Purchased Professional and Technical Services</u>				
322 Professional Educational Services – lus		23,376.03		23,376.03
323 Professional Educational Services – Other Educational Agencies	600.00			600.00
Total Purchased Professional and Technical Services	\$600.00	\$23,376.03		\$23,976.03
600 <u>Supplies</u>				
610 General Supplies	377.46	2,090.84		2,468.30
650 Supplies & Fees – Technology Related	119.00	2,881.00		3,000.00
Total Supplies	\$496.46	\$4,971.84		\$5,468.30
Total 1240 Academic Support	\$520,952.01	\$660,574.99	\$95,578.38	\$1,277,105.38

LEA : 108051003 Bedford Area SD

Printed 11/21/2017 9:26:56 AM

General Fund (10)				
1241 Learning Support – Public	<u>Elementary</u>	<u>Secondary</u>	<u>Federal</u>	<u>Total</u>
100 <u>Personnel Services – Salaries</u>				
100 Personnel Services – Salaries	301,721.44	341,873.95	66,127.63	709,723.02
Total Personnel Services – Salaries	\$301,721.44	\$341,873.95	\$66,127.63	\$709,723.02
200 <u>Personnel Services – Employee Benefits</u>				
210 Group Insurance – Contracted Provider	94,637.09	114,083.89	9,778.17	218,499.15
220 Social Security Contributions	21,422.11	24,314.92	4,888.66	50,625.69
230 PSERS Retirement Contributions	87,599.68	110,552.95	11,280.86	209,433.49
260 Workers' Compensation	2,021.62	2,290.38	443.06	4,755.06
292 Health Savings Accounts	12,453.61	15,540.00	3,060.00	31,053.61
Total Personnel Services – Employee Benefits	\$218,134.11	\$266,782.14	\$29,450.75	\$514,367.00
300 <u>Purchased Professional and Technical Services</u>				
322 Professional Educational Services – lus		23,376.03		23,376.03
Total Purchased Professional and Technical Services		\$23,376.03		\$23,376.03
600 <u>Supplies</u>				
610 General Supplies	377.46	814.57		1,192.03
650 Supplies & Fees – Technology Related	119.00	2,881.00		3,000.00
Total Supplies	\$496.46	\$3,695.57		\$4,192.03
Total 1241 Learning Support – Public	\$520,352.01	\$635,727.69	\$95,578.38	\$1,251,658.08

LEA : 108051003 Bedford Area SD

Printed 11/21/2017 9:26:56 AM

General Fund (10)

1243 Gifted Support

	Elementary	Secondary	Federal	Total
100 <u>Personnel Services – Salaries</u>				
100 Personnel Services – Salaries		15,668.62		15,668.62
Total Personnel Services – Salaries		\$15,668.62		\$15,668.62
200 <u>Personnel Services – Employee Benefits</u>				
210 Group Insurance – Contracted Provider		1,649.44		1,649.44
220 Social Security Contributions		1,185.63		1,185.63
230 PSERS Retirement Contributions		4,700.06		4,700.06
260 Workers' Compensation		104.78		104.78
292 Health Savings Accounts		262.50		262.50
Total Personnel Services – Employee Benefits		\$7,902.41		\$7,902.41
300 <u>Purchased Professional and Technical Services</u>				
323 Professional Educational Services – Other Educational Agencies	600.00			600.00
Total Purchased Professional and Technical Services	\$600.00			\$600.00
600 <u>Supplies</u>				
610 General Supplies		1,276.27		1,276.27
Total Supplies		\$1,276.27		\$1,276.27
Total 1243 Gifted Support	\$600.00	\$24,847.30		\$25,447.30

LEA : 108051003 Bedford Area SD

Printed 11/21/2017 9:26:56 AM

General Fund (10)

1270 Multi-Handicapped Support

	<u>Elementary</u>	<u>Secondary</u>	<u>Federal</u>	<u>Total</u>
100 <u>Personnel Services – Salaries</u>				
100 Personnel Services – Salaries		13,377.60		13,377.60
Total Personnel Services – Salaries		\$13,377.60		\$13,377.60
200 <u>Personnel Services – Employee Benefits</u>				
210 Group Insurance – Contracted Provider		13,463.28		13,463.28
220 Social Security Contributions		532.27		532.27
230 PSERS Retirement Contributions		4,002.04		4,002.04
260 Workers' Compensation		89.64		89.64
292 Health Savings Accounts		3,000.00		3,000.00
Total Personnel Services – Employee Benefits		\$21,087.23		\$21,087.23
300 <u>Purchased Professional and Technical Services</u>				
322 Professional Educational Services – lus		70,928.73		70,928.73
Total Purchased Professional and Technical Services		\$70,928.73		\$70,928.73
Total 1270 Multi-Handicapped Support		\$105,393.56		\$105,393.56

LEA : 108051003 Bedford Area SD

Printed 11/21/2017 9:26:56 AM

General Fund (10)

1280 Early Intervention Support

300 Purchased Professional and Technical Services

	<u>Elementary</u>	<u>Secondary</u>	<u>Federal</u>	<u>Total</u>
322 Professional Educational Services – lus	7,404.59			7,404.59
Total Purchased Professional and Technical Services	\$7,404.59			\$7,404.59
Total 1280 Early Intervention Support	\$7,404.59			\$7,404.59

LEA : 108051003 Bedford Area SD

Printed 11/21/2017 9:26:56 AM

General Fund (10)				
1290 Special Programs - Other Support	<u>Elementary</u>	<u>Secondary</u>	<u>Federal</u>	<u>Total</u>
100 <u>Personnel Services – Salaries</u>				
100 Personnel Services – Salaries		66,061.91		66,061.91
Total Personnel Services – Salaries		\$66,061.91		\$66,061.91
200 <u>Personnel Services – Employee Benefits</u>				
210 Group Insurance – Contracted Provider		17,337.12		17,337.12
220 Social Security Contributions		4,931.37		4,931.37
230 PSERS Retirement Contributions		19,838.38		19,838.38
260 Workers' Compensation		442.54		442.54
292 Health Savings Accounts		2,100.00		2,100.00
Total Personnel Services – Employee Benefits		\$44,649.41		\$44,649.41
300 <u>Purchased Professional and Technical Services</u>				
322 Professional Educational Services – Ius	214.20	214.19		428.39
329 Professional Educational Services – Other	5,720.00	1,299.38		7,019.38
Total Purchased Professional and Technical Services	\$5,934.20	\$1,513.57		\$7,447.77
500 <u>Other Purchased Services</u>				
561 Tuition To Other School Districts Within the State	34,181.84	33,132.17		67,314.01
562 Tuition To Pennsylvania Charter Schools	190,118.26	190,118.27		380,236.53
567 Tuition To Approved Private Schools (APS) and PA Chartered Schools for the Deaf and Blind		6,731.67		6,731.67
580 Travel		1,036.33		1,036.33
594 IU Payment By Withholding for Institutionalized Children's Programs – Special Classes		591.85		591.85
Total Other Purchased Services	\$224,300.10	\$231,610.29		\$455,910.39
600 <u>Supplies</u>				
610 General Supplies		227.83		227.83
Total Supplies		\$227.83		\$227.83
Total 1290 Special Programs - Other Support	\$230,234.30	\$344,063.01		\$574,297.31

LEA : 108051003 Bedford Area SD

Printed 11/21/2017 9:26:56 AM

General Fund (10)				
1300 Vocational Education	<u>Elementary</u>	<u>Secondary</u>	<u>Federal</u>	<u>Total</u>
100 <u>Personnel Services – Salaries</u>				
100 Personnel Services – Salaries		368,074.75		368,074.75
Total Personnel Services – Salaries		\$368,074.75		\$368,074.75
200 <u>Personnel Services – Employee Benefits</u>				
210 Group Insurance – Contracted Provider		96,766.72		96,766.72
220 Social Security Contributions		27,522.38		27,522.38
230 PSERS Retirement Contributions		109,120.00		109,120.00
260 Workers' Compensation		2,466.03		2,466.03
292 Health Savings Accounts		12,000.00		12,000.00
Total Personnel Services – Employee Benefits		\$247,875.13		\$247,875.13
500 <u>Other Purchased Services</u>				
564 Tuition To Career and Technology Centers		515,621.75		515,621.75
Total Other Purchased Services		\$515,621.75		\$515,621.75
600 <u>Supplies</u>				
610 General Supplies		11,157.43		11,157.43
640 Books and Periodicals		344.85		344.85
650 Supplies & Fees – Technology Related		99.00		99.00
Total Supplies		\$11,601.28		\$11,601.28
Total 1300 Vocational Education		\$1,143,172.91		\$1,143,172.91

LEA : 108051003 Bedford Area SD

Printed 11/21/2017 9:26:56 AM

General Fund (10)

1400 Other Instructional Programs – Elementary / Secondary	Elementary	Secondary	Federal	Total
100 Personnel Services – Salaries				
100 Personnel Services – Salaries	24,403.63	2,002.50		26,406.13
Total Personnel Services – Salaries	\$24,403.63	\$2,002.50		\$26,406.13
200 Personnel Services – Employee Benefits				
210 Group Insurance – Contracted Provider	85.32			85.32
220 Social Security Contributions	1,878.55	153.07		2,031.62
230 PSERS Retirement Contributions	7,026.84	601.35		7,628.19
260 Workers' Compensation	163.45	13.41		176.86
Total Personnel Services – Employee Benefits	\$9,154.16	\$767.83		\$9,921.99
300 Purchased Professional and Technical Services				
322 Professional Educational Services – Ius	50,849.00	108,486.24		159,335.24
323 Professional Educational Services – Other Educational Agencies	19,978.25	19,978.25		39,956.50
329 Professional Educational Services – Other	16,720.00	68,032.00		84,752.00
330 Other Professional Services	1,749.50	1,749.50		3,499.00
Total Purchased Professional and Technical Services	\$89,296.75	\$198,245.99		\$287,542.74
400 Purchased Property Services				
430 Repairs and Maintenance Services	(87.50)	(87.50)		(175.00)
440 Rentals		2,287.50		2,287.50
Total Purchased Property Services	(\$87.50)	\$2,200.00		\$2,112.50
500 Other Purchased Services				
530 Communications		545.07		545.07
561 Tuition To Other School Districts Within the State		41,119.63		41,119.63
580 Travel	342.90	556.91		899.81
Total Other Purchased Services	\$342.90	\$42,221.61		\$42,564.51
600 Supplies				
620 Energy		190.40		190.40
640 Books and Periodicals	12.00	12.00		24.00
Total Supplies	\$12.00	\$202.40		\$214.40
700 Property				
768 Capitalized Technology Software - Replacement	3,295.76	3,295.77		6,591.53
Total Property	\$3,295.76	\$3,295.77		\$6,591.53
Total 1400 Other Instructional Programs – Elementary / Secondary	\$126,417.70	\$248,936.10		\$375,353.80

LEA : 108051003 Bedford Area SD

Printed 11/21/2017 9:26:56 AM

General Fund (10)

1410 Drivers' Education

400 Purchased Property Services

	<u>Elementary</u>	<u>Secondary</u>	<u>Federal</u>	<u>Total</u>
440 Rentals		2,100.00		2,100.00
Total Purchased Property Services		\$2,100.00		\$2,100.00
Total 1410 Drivers' Education		\$2,100.00		\$2,100.00

LEA : 108051003 Bedford Area SD

Printed 11/21/2017 9:26:56 AM

General Fund (10)

1420 Summer School

	Elementary	Secondary	Federal	Total
100 Personnel Services – Salaries				
100 Personnel Services – Salaries		2,002.50		2,002.50
Total Personnel Services – Salaries		\$2,002.50		\$2,002.50
200 Personnel Services – Employee Benefits				
220 Social Security Contributions		153.07		153.07
230 PSERS Retirement Contributions		601.35		601.35
260 Workers’ Compensation		13.41		13.41
Total Personnel Services – Employee Benefits		\$767.83		\$767.83
600 Supplies				
620 Energy		190.40		190.40
Total Supplies		\$190.40		\$190.40
Total 1420 Summer School		\$2,960.73		\$2,960.73

LEA : 108051003 Bedford Area SD

Printed 11/21/2017 9:26:56 AM

General Fund (10)

1440 Alternative Regular Education Programs	<u>Elementary</u>	<u>Secondary</u>	<u>Federal</u>	<u>Total</u>
300 <u>Purchased Professional and Technical Services</u>				
322 Professional Educational Services – Ius	50,849.00	108,486.24		159,335.24
329 Professional Educational Services – Other		67,912.00		67,912.00
Total Purchased Professional and Technical Services	\$50,849.00	\$176,398.24		\$227,247.24
500 <u>Other Purchased Services</u>				
561 Tuition To Other School Districts Within the State		27,218.16		27,218.16
Total Other Purchased Services		\$27,218.16		\$27,218.16
Total 1440 Alternative Regular Education Programs	\$50,849.00	\$203,616.40		\$254,465.40

LEA : 108051003 Bedford Area SD

Printed 11/21/2017 9:26:56 AM

General Fund (10)

1441 Adjudicated / Court-Placed Programs	<u>Elementary</u>	<u>Secondary</u>	<u>Federal</u>	<u>Total</u>
300 <u>Purchased Professional and Technical Services</u>				
322 Professional Educational Services – Ius		52,452.67		52,452.67
Total Purchased Professional and Technical Services		\$52,452.67		\$52,452.67
500 <u>Other Purchased Services</u>				
561 Tuition To Other School Districts Within the State		27,218.16		27,218.16
Total Other Purchased Services		\$27,218.16		\$27,218.16
Total 1441 Adjudicated / Court-Placed Programs		\$79,670.83		\$79,670.83

LEA : 108051003 Bedford Area SD

Printed 11/21/2017 9:26:56 AM

General Fund (10)

1442 Alternative Education Programs	<u>Elementary</u>	<u>Secondary</u>	<u>Federal</u>	<u>Total</u>
300 <u>Purchased Professional and Technical Services</u>				
322 Professional Educational Services – Ius	50,849.00	56,033.57		106,882.57
329 Professional Educational Services – Other		67,912.00		67,912.00
Total Purchased Professional and Technical Services	\$50,849.00	\$123,945.57		\$174,794.57
Total 1442 Alternative Education Programs	\$50,849.00	\$123,945.57		\$174,794.57

LEA : 108051003 Bedford Area SD

Printed 11/21/2017 9:26:56 AM

General Fund (10)				
1490 Additional Other Instructional Programs	<u>Elementary</u>	<u>Secondary</u>	<u>Federal</u>	<u>Total</u>
100 <u>Personnel Services – Salaries</u>				
100 Personnel Services – Salaries	24,403.63			24,403.63
Total Personnel Services – Salaries	\$24,403.63			\$24,403.63
200 <u>Personnel Services – Employee Benefits</u>				
210 Group Insurance – Contracted Provider	85.32			85.32
220 Social Security Contributions	1,878.55			1,878.55
230 PSERS Retirement Contributions	7,026.84			7,026.84
260 Workers' Compensation	163.45			163.45
Total Personnel Services – Employee Benefits	\$9,154.16			\$9,154.16
300 <u>Purchased Professional and Technical Services</u>				
323 Professional Educational Services – Other Educational Agencies	19,978.25	19,978.25		39,956.50
329 Professional Educational Services – Other	16,720.00	120.00		16,840.00
330 Other Professional Services	1,749.50	1,749.50		3,499.00
Total Purchased Professional and Technical Services	\$38,447.75	\$21,847.75		\$60,295.50
400 <u>Purchased Property Services</u>				
430 Repairs and Maintenance Services	(87.50)	(87.50)		(175.00)
440 Rentals		187.50		187.50
Total Purchased Property Services	(\$87.50)	\$100.00		\$12.50
500 <u>Other Purchased Services</u>				
530 Communications		545.07		545.07
561 Tuition To Other School Districts Within the State		13,901.47		13,901.47
580 Travel	342.90	556.91		899.81
Total Other Purchased Services	\$342.90	\$15,003.45		\$15,346.35
600 <u>Supplies</u>				
640 Books and Periodicals	12.00	12.00		24.00
Total Supplies	\$12.00	\$12.00		\$24.00
700 <u>Property</u>				
768 Capitalized Technology Software - Replacement	3,295.76	3,295.77		6,591.53
Total Property	\$3,295.76	\$3,295.77		\$6,591.53
Total 1490 Additional Other Instructional Programs	\$75,568.70	\$40,258.97		\$115,827.67

LEA : 108051003 Bedford Area SD

Printed 11/21/2017 9:26:56 AM

General Fund (10)

1500 Nonpublic School Programs

Elementary Secondary Federal Total

600 <u>Supplies</u>				
650 Supplies & Fees – Technology Related			4,978.97	4,978.97
Total Supplies			\$4,978.97	\$4,978.97
Total 1500 Nonpublic School Programs			\$4,978.97	\$4,978.97

LEA : 108051003 Bedford Area SD

Printed 11/21/2017 9:26:56 AM

General Fund (10)				
1800 Pre-Kindergarten	<u>Elementary</u>	<u>Secondary</u>	<u>Federal</u>	<u>Total</u>
600 <u>Supplies</u>				
630 Food				3,550.50
Total Supplies				\$3,550.50
700 <u>Property</u>				
752 Capital Equipment – Original and Additional			1,870.83	1,870.83
Total Property			\$1,870.83	\$1,870.83
Total 1800 Pre-Kindergarten			\$1,870.83	\$5,421.33

LEA : 108051003 Bedford Area SD

Printed 11/21/2017 9:26:56 AM

General Fund (10)				
1801 Pre-K Instruction	<u>Elementary</u>	<u>Secondary</u>	<u>Federal</u>	<u>Total</u>
700 <u>Property</u>				
752 Capital Equipment – Original and Additional			1,870.83	1,870.83
Total Property			\$1,870.83	\$1,870.83
Total 1801 Pre-K Instruction			\$1,870.83	\$1,870.83

LEA : 108051003 Bedford Area SD

Printed 11/21/2017 9:26:56 AM

General Fund (10)

1805 Pre-K Food Services

Elementary Secondary Federal Total

600 <u>Supplies</u>				
630 Food				3,550.50

Total Supplies				\$3,550.50
Total 1805 Pre-K Food Services				\$3,550.50

LEA : 108051003 Bedford Area SD

Printed 11/21/2017 9:26:58 AM

General Fund (10)

2000 Support Services		Total
100 <u>Personnel Services – Salaries</u>		
100 Personnel Services – Salaries		2,948,456.21
Total Personnel Services – Salaries		\$2,948,456.21
200 <u>Personnel Services – Employee Benefits</u>		
210 Group Insurance – Contracted Provider		864,793.00
220 Social Security Contributions		220,054.42
230 PSERS Retirement Contributions		850,653.23
240 Tuition Reimbursement		49,483.35
260 Workers’ Compensation		19,735.37
292 Health Savings Accounts		140,239.50
299 All Other Employee Benefits		13,149.17
Total Personnel Services – Employee Benefits		\$2,158,108.04
300 <u>Purchased Professional and Technical Services</u>		
322 Professional Educational Services – Ius		6,756.80
323 Professional Educational Services – Other Educational Agencies		3,175.00
324 Professional Educational Services – Employee Training and Development Services		14,282.64
329 Professional Educational Services – Other		115,467.68
330 Other Professional Services		102,661.24
340 Technical Services		159,347.49
390 Other Purchased Professional and Technical Services		39,324.94
Total Purchased Professional and Technical Services		\$441,015.79
400 <u>Purchased Property Services</u>		
410 Cleaning Services		30,545.84
420 Utility Services		84,547.06
430 Repairs and Maintenance Services		(12,970.22)
440 Rentals		24,332.60
460 Extermination Services		330.17
Total Purchased Property Services		\$126,785.45
500 <u>Other Purchased Services</u>		
513 Contracted Carriers		1,991,366.04
516 Student Transportation Services From the IU		40,600.54
520 Insurance – General		156,516.18
530 Communications		25,573.80
549 Other Advertising/Public Relations		6,617.19
550 Printing and Binding		19,711.63
580 Travel		14,518.02
595 IU Payments By Withholding		10,402.18
Total Other Purchased Services		\$2,265,305.58
600 <u>Supplies</u>		
610 General Supplies		219,491.12
620 Energy		500,692.10
630 Food		5,145.50
640 Books and Periodicals		12,750.35
650 Supplies & Fees – Technology Related		70,530.38

LEA : 108051003 Bedford Area SD

Printed 11/21/2017 9:26:58 AM

General Fund (10)

2000 Support Services

	<u>Total</u>
Total Supplies	\$808,609.45
700 <u>Property</u>	
762 Capitalized Equipment - Replacement	28,402.98
766 Capitalized Technology Hardware and Equipment – Replacement	100,362.53
Total Property	\$128,765.51
800 <u>Other Objects</u>	
810 Dues and Fees	19,353.34
899 Pass-Through Funds	478,914.83
Total Other Objects	\$498,268.17
Total 2000 Support Services	\$9,375,314.20

LEA : 108051003 Bedford Area SD

Printed 11/21/2017 9:26:58 AM

General Fund (10)

2100 Support Services – Students	Elementary	Secondary	Federal	Total
100 <u>Personnel Services – Salaries</u>				
100 Personnel Services – Salaries	92,300.06	239,157.37	95,946.01	427,403.44
Total Personnel Services – Salaries	\$92,300.06	\$239,157.37	\$95,946.01	\$427,403.44
200 <u>Personnel Services – Employee Benefits</u>				
210 Group Insurance – Contracted Provider	18,379.48	53,528.63	15,290.49	87,198.60
220 Social Security Contributions	6,898.56	17,669.05	7,146.92	31,714.53
230 PSERS Retirement Contributions	35,544.39	76,023.69	15,412.16	126,980.24
260 Workers' Compensation	618.38	1,602.42	642.85	2,863.65
292 Health Savings Accounts	2,240.00	8,950.00	1,960.00	13,150.00
Total Personnel Services – Employee Benefits	\$63,680.81	\$157,773.79	\$40,452.42	\$261,907.02
300 <u>Purchased Professional and Technical Services</u>				
322 Professional Educational Services – lus	576.16	576.17		1,685.06
329 Professional Educational Services – Other			5,280.00	5,280.00
330 Other Professional Services	1,750.00	1,750.00		3,500.00
340 Technical Services	72.00	5,355.46		5,427.46
Total Purchased Professional and Technical Services	\$2,398.16	\$7,681.63	\$5,280.00	\$15,892.52
400 <u>Purchased Property Services</u>				
440 Rentals	1,121.56	4,283.17		5,404.73
Total Purchased Property Services	\$1,121.56	\$4,283.17		\$5,404.73
500 <u>Other Purchased Services</u>				
549 Other Advertising/Public Relations	170.51	161.48		331.99
580 Travel	357.22	352.46		709.68
Total Other Purchased Services	\$527.73	\$513.94		\$1,041.67
600 <u>Supplies</u>				
610 General Supplies	1,802.57	4,478.50		6,281.07
640 Books and Periodicals	1,079.87	993.94		2,073.81
650 Supplies & Fees – Technology Related	2,478.08	3,436.80	6,108.12	12,023.00
Total Supplies	\$5,360.52	\$8,909.24	\$6,108.12	\$20,377.88
800 <u>Other Objects</u>				
810 Dues and Fees	145.22	128.78		274.00
Total Other Objects	\$145.22	\$128.78		\$274.00
Total 2100 Support Services – Students	\$165,534.06	\$418,447.92	\$147,786.55	\$732,301.26

LEA : 108051003 Bedford Area SD

Printed 11/21/2017 9:26:58 AM

General Fund (10)

2110 Supervision of Student Services	Elementary	Secondary	Federal	Total
100 <u>Personnel Services – Salaries</u>				
100 Personnel Services – Salaries	14,840.11	13,159.89		28,000.00
Total Personnel Services – Salaries	\$14,840.11	\$13,159.89		\$28,000.00
200 <u>Personnel Services – Employee Benefits</u>				
210 Group Insurance – Contracted Provider	10,162.88	8,409.38		18,572.26
220 Social Security Contributions	1,113.13	986.94		2,100.07
230 PSERS Retirement Contributions	4,456.48	3,951.98		8,408.46
260 Workers' Compensation	99.36	88.29		187.65
292 Health Savings Accounts	1,298.50	1,151.50		2,450.00
Total Personnel Services – Employee Benefits	\$17,130.35	\$14,588.09		\$31,718.44
300 <u>Purchased Professional and Technical Services</u>				
330 Other Professional Services	1,750.00	1,750.00		3,500.00
Total Purchased Professional and Technical Services	\$1,750.00	\$1,750.00		\$3,500.00
400 <u>Purchased Property Services</u>				
440 Rentals	1,121.56	994.51		2,116.07
Total Purchased Property Services	\$1,121.56	\$994.51		\$2,116.07
500 <u>Other Purchased Services</u>				
549 Other Advertising/Public Relations	170.51	161.48		331.99
580 Travel	90.84	90.83		181.67
Total Other Purchased Services	\$261.35	\$252.31		\$513.66
600 <u>Supplies</u>				
610 General Supplies	535.49	552.08		1,087.57
640 Books and Periodicals	92.67	82.18		174.85
650 Supplies & Fees – Technology Related	2,478.08	1,851.80	6,108.12	10,438.00
Total Supplies	\$3,106.24	\$2,486.06	\$6,108.12	\$11,700.42
Total 2110 Supervision of Student Services	\$38,209.61	\$33,230.86	\$6,108.12	\$77,548.59

LEA : 108051003 Bedford Area SD

Printed 11/21/2017 9:26:58 AM

General Fund (10)

2111 Supervision of Student Services – Head of Component	Elementary	Secondary	Federal	Total
100 <u>Personnel Services – Salaries</u>				
100 Personnel Services – Salaries	14,840.11	13,159.89		28,000.00
Total Personnel Services – Salaries	\$14,840.11	\$13,159.89		\$28,000.00
200 <u>Personnel Services – Employee Benefits</u>				
210 Group Insurance – Contracted Provider	10,162.88	8,409.38		18,572.26
220 Social Security Contributions	1,113.13	986.94		2,100.07
230 PSERS Retirement Contributions	4,456.48	3,951.98		8,408.46
260 Workers' Compensation	99.36	88.29		187.65
292 Health Savings Accounts	1,298.50	1,151.50		2,450.00
Total Personnel Services – Employee Benefits	\$17,130.35	\$14,588.09		\$31,718.44
300 <u>Purchased Professional and Technical Services</u>				
330 Other Professional Services	1,750.00	1,750.00		3,500.00
Total Purchased Professional and Technical Services	\$1,750.00	\$1,750.00		\$3,500.00
400 <u>Purchased Property Services</u>				
440 Rentals	1,121.56	994.51		2,116.07
Total Purchased Property Services	\$1,121.56	\$994.51		\$2,116.07
500 <u>Other Purchased Services</u>				
549 Other Advertising/Public Relations	170.51	161.48		331.99
580 Travel	90.84	90.83		181.67
Total Other Purchased Services	\$261.35	\$252.31		\$513.66
600 <u>Supplies</u>				
610 General Supplies	535.49	552.08		1,087.57
640 Books and Periodicals	92.67	82.18		174.85
650 Supplies & Fees – Technology Related	2,478.08	1,851.80	6,108.12	10,438.00
Total Supplies	\$3,106.24	\$2,486.06	\$6,108.12	\$11,700.42
Total 2111 Supervision of Student Services – Head of Component	\$38,209.61	\$33,230.86	\$6,108.12	\$77,548.59

LEA : 108051003 Bedford Area SD

Printed 11/21/2017 9:26:58 AM

General Fund (10)				
2120 Guidance Services	<u>Elementary</u>	<u>Secondary</u>	<u>Federal</u>	<u>Total</u>
100 <u>Personnel Services – Salaries</u>				
100 Personnel Services – Salaries	67,958.96	218,223.59	26,847.93	313,030.48
Total Personnel Services – Salaries	\$67,958.96	\$218,223.59	\$26,847.93	\$313,030.48
200 <u>Personnel Services – Employee Benefits</u>				
210 Group Insurance – Contracted Provider	6,119.00	43,403.28	35.52	49,557.80
220 Social Security Contributions	5,074.48	16,109.10	2,053.82	23,237.40
230 PSERS Retirement Contributions	23,523.26	65,532.66	3,872.91	92,928.83
260 Workers' Compensation	455.39	1,461.97	179.93	2,097.29
292 Health Savings Accounts	672.00	7,578.00		8,250.00
Total Personnel Services – Employee Benefits	\$35,844.13	\$134,085.01	\$6,142.18	\$176,071.32
300 <u>Purchased Professional and Technical Services</u>				
340 Technical Services	72.00	5,355.46		5,427.46
Total Purchased Professional and Technical Services	\$72.00	\$5,355.46		\$5,427.46
400 <u>Purchased Property Services</u>				
440 Rentals		3,288.66		3,288.66
Total Purchased Property Services		\$3,288.66		\$3,288.66
600 <u>Supplies</u>				
610 General Supplies	708.96	3,431.48		4,140.44
640 Books and Periodicals	146.62	75.33		221.95
650 Supplies & Fees – Technology Related		1,585.00		1,585.00
Total Supplies	\$855.58	\$5,091.81		\$5,947.39
Total 2120 Guidance Services	\$104,730.67	\$366,044.53	\$32,990.11	\$503,765.31

LEA : 108051003 Bedford Area SD

Printed 11/21/2017 9:26:58 AM

General Fund (10)

2140 Psychological Services	Elementary	Secondary	Federal	Total
100 <u>Personnel Services – Salaries</u>				
100 Personnel Services – Salaries	9,500.99	7,773.89	69,098.08	86,372.96
Total Personnel Services – Salaries	\$9,500.99	\$7,773.89	\$69,098.08	\$86,372.96
200 <u>Personnel Services – Employee Benefits</u>				
210 Group Insurance – Contracted Provider	2,097.60	1,715.97	15,254.97	19,068.54
220 Social Security Contributions	710.95	573.01	5,093.10	6,377.06
230 PSERS Retirement Contributions	7,564.65	6,539.05	11,539.25	25,642.95
260 Workers' Compensation	63.63	52.16	462.92	578.71
292 Health Savings Accounts	269.50	220.50	1,960.00	2,450.00
Total Personnel Services – Employee Benefits	\$10,706.33	\$9,100.69	\$34,310.24	\$54,117.26
300 <u>Purchased Professional and Technical Services</u>				
322 Professional Educational Services – lus	576.16	576.17		1,152.33
Total Purchased Professional and Technical Services	\$576.16	\$576.17		\$1,152.33
500 <u>Other Purchased Services</u>				
580 Travel	266.38	261.63		528.01
Total Other Purchased Services	\$266.38	\$261.63		\$528.01
600 <u>Supplies</u>				
610 General Supplies	558.12	494.94		1,053.06
640 Books and Periodicals	840.58	836.43		1,677.01
Total Supplies	\$1,398.70	\$1,331.37		\$2,730.07
800 <u>Other Objects</u>				
810 Dues and Fees	145.22	128.78		274.00
Total Other Objects	\$145.22	\$128.78		\$274.00
Total 2140 Psychological Services	\$22,593.78	\$19,172.53	\$103,408.32	\$145,174.63

LEA : 108051003 Bedford Area SD

Printed 11/21/2017 9:26:58 AM

General Fund (10)

2150 Speech Pathology and Audiology Services	<u>Elementary</u>	<u>Secondary</u>	<u>Federal</u>	<u>Total</u>
300 <u>Purchased Professional and Technical Services</u>				
329 Professional Educational Services – Other			5,280.00	5,280.00
Total Purchased Professional and Technical Services			\$5,280.00	\$5,280.00
Total 2150 Speech Pathology and Audiology Services			\$5,280.00	\$5,280.00

LEA : 108051003 Bedford Area SD

Printed 11/21/2017 9:26:58 AM

General Fund (10)

2160 Social Work Services

<u>Elementary</u>	<u>Secondary</u>	<u>Federal</u>	<u>Total</u>
-------------------	------------------	----------------	--------------

300 Purchased Professional and Technical Services

322 Professional Educational Services – lus			532.73
---	--	--	--------

Total Purchased Professional and Technical Services			\$532.73
--	--	--	-----------------

Total 2160 Social Work Services			\$532.73
--	--	--	-----------------

LEA : 108051003 Bedford Area SD

Printed 11/21/2017 9:26:58 AM

General Fund (10)

2200 Support Services – Instructional Staff	Elementary	Secondary	Federal	Total
100 Personnel Services – Salaries				
100 Personnel Services – Salaries	124,217.72	141,733.32	34,534.47	300,485.51
Total Personnel Services – Salaries	\$124,217.72	\$141,733.32	\$34,534.47	\$300,485.51
200 Personnel Services – Employee Benefits				
210 Group Insurance – Contracted Provider	32,644.57	26,751.19	3,229.06	62,624.82
220 Social Security Contributions	9,371.15	10,561.52	2,491.19	22,423.86
230 PSERS Retirement Contributions	36,800.65	41,928.94	9,082.71	87,812.30
240 Tuition Reimbursement	10,223.61	7,177.64		17,401.25
260 Workers' Compensation	832.50	949.72	224.31	2,006.53
292 Health Savings Accounts	3,850.00	3,433.50	406.00	7,689.50
Total Personnel Services – Employee Benefits	\$93,722.48	\$90,802.51	\$15,433.27	\$199,958.26
300 Purchased Professional and Technical Services				
322 Professional Educational Services – Ius			3,434.14	3,434.14
323 Professional Educational Services – Other Educational Agencies			3,175.00	3,175.00
324 Professional Educational Services – Employee Training and Development Services	290.00	175.00	7,970.98	8,435.98
340 Technical Services	17,430.17	32,386.84		49,817.01
Total Purchased Professional and Technical Services	\$17,720.17	\$32,561.84	\$14,580.12	\$64,862.13
400 Purchased Property Services				
430 Repairs and Maintenance Services	172.20	85.00		257.20
440 Rentals	3,838.11			3,838.11
Total Purchased Property Services	\$4,010.31	\$85.00		\$4,095.31
500 Other Purchased Services				
530 Communications	135.18	311.95		447.13
580 Travel	26.10	328.46	6,381.55	6,736.11
Total Other Purchased Services	\$161.28	\$640.41	\$6,381.55	\$7,183.24
600 Supplies				
610 General Supplies	10,900.75	25,871.12	241.63	37,013.50
630 Food	1,503.78	2,103.89	1,537.83	5,145.50
640 Books and Periodicals	4,896.67	3,544.00	1,058.79	9,499.46
650 Supplies & Fees – Technology Related	14,619.40	18,331.44		32,950.84
Total Supplies	\$31,920.60	\$49,850.45	\$2,838.25	\$84,609.30
700 Property				
766 Capitalized Technology Hardware and Equipment – Replacement	22,175.66	77,522.87		99,698.53
Total Property	\$22,175.66	\$77,522.87		\$99,698.53
Total 2200 Support Services – Instructional Staff	\$293,928.22	\$393,196.40	\$73,767.66	\$760,892.28

LEA : 108051003 Bedford Area SD

Printed 11/21/2017 9:26:58 AM

General Fund (10)

2220 Technology Support Services	Elementary	Secondary	Federal	Total
100 Personnel Services – Salaries				
100 Personnel Services – Salaries	35,429.28	31,403.03		66,832.31
Total Personnel Services – Salaries	\$35,429.28	\$31,403.03		\$66,832.31
200 Personnel Services – Employee Benefits				
210 Group Insurance – Contracted Provider	8,357.81	7,407.91		15,765.72
220 Social Security Contributions	2,685.41	2,372.14		5,057.55
230 PSERS Retirement Contributions	10,369.43	9,191.03		19,560.46
260 Workers' Compensation	237.42	210.48		447.90
292 Health Savings Accounts	1,078.00	955.50		2,033.50
Total Personnel Services – Employee Benefits	\$22,728.07	\$20,137.06		\$42,865.13
600 Supplies				
610 General Supplies	2,274.18	5,149.53		7,423.71
Total Supplies	\$2,274.18	\$5,149.53		\$7,423.71
Total 2220 Technology Support Services	\$60,431.53	\$56,689.62		\$117,121.15

LEA : 108051003 Bedford Area SD

Printed 11/21/2017 9:26:58 AM

General Fund (10)				
2240 Computer-Assisted Instruction Support Services	<u>Elementary</u>	<u>Secondary</u>	<u>Federal</u>	<u>Total</u>
300 <u>Purchased Professional and Technical Services</u>				
340 Technical Services	17,430.17	32,386.84		49,817.01
Total Purchased Professional and Technical Services	\$17,430.17	\$32,386.84		\$49,817.01
400 <u>Purchased Property Services</u>				
430 Repairs and Maintenance Services	172.20	85.00		257.20
440 Rentals	3,838.11			3,838.11
Total Purchased Property Services	\$4,010.31	\$85.00		\$4,095.31
500 <u>Other Purchased Services</u>				
530 Communications	135.18	311.95		447.13
Total Other Purchased Services	\$135.18	\$311.95		\$447.13
600 <u>Supplies</u>				
610 General Supplies	8,485.92	18,858.01		27,343.93
650 Supplies & Fees – Technology Related	14,619.40	18,331.44		32,950.84
Total Supplies	\$23,105.32	\$37,189.45		\$60,294.77
700 <u>Property</u>				
766 Capitalized Technology Hardware and Equipment – Replacement	22,175.66	77,522.87		99,698.53
Total Property	\$22,175.66	\$77,522.87		\$99,698.53
Total 2240 Computer-Assisted Instruction Support Services	\$66,856.64	\$147,496.11		\$214,352.75

LEA : 108051003 Bedford Area SD

Printed 11/21/2017 9:26:58 AM

General Fund (10)

2250 School Library Services	Elementary	Secondary	Federal	Total
100 Personnel Services – Salaries				
100 Personnel Services – Salaries	88,526.84	110,156.89		198,683.73
Total Personnel Services – Salaries	\$88,526.84	\$110,156.89		\$198,683.73
200 Personnel Services – Employee Benefits				
210 Group Insurance – Contracted Provider	24,286.76	19,343.28		43,630.04
220 Social Security Contributions	6,665.72	8,176.12		14,841.84
230 PSERS Retirement Contributions	26,372.85	32,728.72		59,101.57
260 Workers' Compensation	593.32	738.08		1,331.40
292 Health Savings Accounts	2,772.00	2,478.00		5,250.00
Total Personnel Services – Employee Benefits	\$60,690.65	\$63,464.20		\$124,154.85
600 Supplies				
610 General Supplies	140.65	1,863.58		2,004.23
640 Books and Periodicals	4,896.67	3,544.00		8,440.67
Total Supplies	\$5,037.32	\$5,407.58		\$10,444.90
Total 2250 School Library Services	\$154,254.81	\$179,028.67		\$333,283.48

LEA : 108051003 Bedford Area SD

Printed 11/21/2017 9:26:58 AM

General Fund (10)

2270 Instructional Staff Professional Development Services	Elementary	Secondary	Federal	Total
100 Personnel Services – Salaries				
100 Personnel Services – Salaries	261.60	173.40	34,534.47	34,969.47
Total Personnel Services – Salaries	\$261.60	\$173.40	\$34,534.47	\$34,969.47
200 Personnel Services – Employee Benefits				
210 Group Insurance – Contracted Provider			3,229.06	3,229.06
220 Social Security Contributions	20.02	13.26	2,491.19	2,524.47
230 PSERS Retirement Contributions	58.37	9.19	9,082.71	9,150.27
240 Tuition Reimbursement	10,223.61	7,177.64		17,401.25
260 Workers' Compensation	1.76	1.16	224.31	227.23
292 Health Savings Accounts			406.00	406.00
Total Personnel Services – Employee Benefits	\$10,303.76	\$7,201.25	\$15,433.27	\$32,938.28
300 Purchased Professional and Technical Services				
322 Professional Educational Services – Ius			3,434.14	3,434.14
323 Professional Educational Services – Other Educational Agencies			3,175.00	3,175.00
324 Professional Educational Services – Employee Training and Development Services	290.00	175.00	7,970.98	8,435.98
Total Purchased Professional and Technical Services	\$290.00	\$175.00	\$14,580.12	\$15,045.12
500 Other Purchased Services				
580 Travel	26.10	328.46	6,381.55	6,736.11
Total Other Purchased Services	\$26.10	\$328.46	\$6,381.55	\$6,736.11
600 Supplies				
610 General Supplies			241.63	241.63
630 Food	1,503.78	2,103.89	1,537.83	5,145.50
640 Books and Periodicals			1,058.79	1,058.79
Total Supplies	\$1,503.78	\$2,103.89	\$2,838.25	\$6,445.92
Total 2270 Instructional Staff Professional Development Services	\$12,385.24	\$9,982.00	\$73,767.66	\$96,134.90

LEA : 108051003 Bedford Area SD

Printed 11/21/2017 9:26:58 AM

General Fund (10)				
2300 Support Services – Administration	<u>Elementary</u>	<u>Secondary</u>	<u>Federal</u>	<u>Total</u>
100 <u>Personnel Services – Salaries</u>				
100 Personnel Services – Salaries	332,744.49	415,001.81		1,111,869.62
Total Personnel Services – Salaries	\$332,744.49	\$415,001.81		\$1,111,869.62
200 <u>Personnel Services – Employee Benefits</u>				
210 Group Insurance – Contracted Provider	86,564.93	127,564.18		283,241.79
220 Social Security Contributions	25,090.72	30,758.85		83,234.77
230 PSERS Retirement Contributions	98,626.48	121,816.57		308,146.92
260 Workers' Compensation	2,229.13	2,763.41		7,431.76
292 Health Savings Accounts	14,838.00	19,812.00		44,900.00
Total Personnel Services – Employee Benefits	\$227,349.26	\$302,715.01		\$726,955.24
300 <u>Purchased Professional and Technical Services</u>				
330 Other Professional Services				10,665.80
340 Technical Services				74.99
390 Other Purchased Professional and Technical Services				39,324.94
Total Purchased Professional and Technical Services				\$50,065.73
400 <u>Purchased Property Services</u>				
440 Rentals	2,326.63	2,297.70		7,036.85
Total Purchased Property Services	\$2,326.63	\$2,297.70		\$7,036.85
500 <u>Other Purchased Services</u>				
520 Insurance – General				156,253.18
530 Communications	88.02	160.73		816.15
549 Other Advertising/Public Relations				5,299.12
550 Printing and Binding	165.58	1,490.00		17,747.24
580 Travel	298.79			1,815.25
Total Other Purchased Services	\$552.39	\$1,650.73		\$181,930.94
600 <u>Supplies</u>				
610 General Supplies	2,871.35	7,696.42		24,497.78
640 Books and Periodicals	269.87	512.72		1,177.08
650 Supplies & Fees – Technology Related				264.99
Total Supplies	\$3,141.22	\$8,209.14		\$25,939.85
700 <u>Property</u>				
766 Capitalized Technology Hardware and Equipment – Replacement				664.00
Total Property				\$664.00
800 <u>Other Objects</u>				
810 Dues and Fees	1,673.40	1,594.60		13,437.25
Total Other Objects	\$1,673.40	\$1,594.60		\$13,437.25
Total 2300 Support Services – Administration	\$567,787.39	\$731,468.99		\$2,117,899.48

LEA : 108051003 Bedford Area SD

Printed 11/21/2017 9:26:58 AM

General Fund (10)				
2310 Board Services				
	<u>Elementary</u>	<u>Secondary</u>	<u>Federal</u>	<u>Total</u>
100 <u>Personnel Services – Salaries</u>				
100 Personnel Services – Salaries				4,806.41
Total Personnel Services – Salaries				\$4,806.41
200 <u>Personnel Services – Employee Benefits</u>				
210 Group Insurance – Contracted Provider				1,863.24
220 Social Security Contributions				355.54
230 PSERS Retirement Contributions				1,443.42
260 Workers' Compensation				32.13
292 Health Savings Accounts				245.00
Total Personnel Services – Employee Benefits				\$3,939.33
300 <u>Purchased Professional and Technical Services</u>				
330 Other Professional Services				605.00
Total Purchased Professional and Technical Services				\$605.00
500 <u>Other Purchased Services</u>				
520 Insurance – General				148,954.00
530 Communications				567.40
549 Other Advertising/Public Relations				348.08
550 Printing and Binding				201.00
580 Travel				500.00
Total Other Purchased Services				\$150,570.48
600 <u>Supplies</u>				
610 General Supplies				3,561.15
Total Supplies				\$3,561.15
Total 2310 Board Services				\$163,482.37

LEA : 108051003 Bedford Area SD

Printed 11/21/2017 9:26:58 AM

General Fund (10)

2320 Board Treasurer Services	<u>Elementary</u>	<u>Secondary</u>	<u>Federal</u>	<u>Total</u>
500 <u>Other Purchased Services</u>				
520 Insurance – General				334.00
Total Other Purchased Services				\$334.00
Total 2320 Board Treasurer Services				\$334.00

LEA : 108051003 Bedford Area SD

Printed 11/21/2017 9:26:58 AM

General Fund (10)				
2330 Tax Assessment and Collection Services	<u>Elementary</u>	<u>Secondary</u>	<u>Federal</u>	<u>Total</u>
100 <u>Personnel Services – Salaries</u>				
100 Personnel Services – Salaries				65,245.21
Total Personnel Services – Salaries				\$65,245.21
200 <u>Personnel Services – Employee Benefits</u>				
220 Social Security Contributions				4,991.29
260 Workers’ Compensation				437.12
Total Personnel Services – Employee Benefits				\$5,428.41
300 <u>Purchased Professional and Technical Services</u>				
390 Other Purchased Professional and Technical Services				39,324.94
Total Purchased Professional and Technical Services				\$39,324.94
500 <u>Other Purchased Services</u>				
520 Insurance – General				6,965.18
550 Printing and Binding				12,653.99
Total Other Purchased Services				\$19,619.17
600 <u>Supplies</u>				
610 General Supplies				9,123.27
Total Supplies				\$9,123.27
Total 2330 Tax Assessment and Collection Services				\$138,741.00

LEA : 108051003 Bedford Area SD

Printed 11/21/2017 9:26:58 AM

General Fund (10)

2340 Staff Relations and Negotiations Services

Elementary

Secondary

Federal

Total

600 Supplies

610 General Supplies

21.98

Total Supplies				\$21.98
----------------	--	--	--	---------

Total 2340 Staff Relations and Negotiations Services				\$21.98
--	--	--	--	---------

LEA : 108051003 Bedford Area SD

Printed 11/21/2017 9:26:58 AM

General Fund (10)

2350 Legal and Accounting Services	<u>Elementary</u>	<u>Secondary</u>	<u>Federal</u>	<u>Total</u>
300 <u>Purchased Professional and Technical Services</u>				
330 Other Professional Services				2,349.00
Total Purchased Professional and Technical Services				\$2,349.00
Total 2350 Legal and Accounting Services				\$2,349.00

LEA : 108051003 Bedford Area SD

Printed 11/21/2017 9:26:58 AM

General Fund (10)				
2360 Office of the Superintendent / Executive Director Services	<u>Elementary</u>	<u>Secondary</u>	<u>Federal</u>	<u>Total</u>
100 <u>Personnel Services – Salaries</u>				
100 Personnel Services – Salaries				294,071.70
Total Personnel Services – Salaries				\$294,071.70
200 <u>Personnel Services – Employee Benefits</u>				
210 Group Insurance – Contracted Provider				67,249.44
220 Social Security Contributions				22,038.37
230 PSERS Retirement Contributions				86,260.45
260 Workers' Compensation				1,969.97
292 Health Savings Accounts				10,005.00
Total Personnel Services – Employee Benefits				\$187,523.23
300 <u>Purchased Professional and Technical Services</u>				
330 Other Professional Services				7,711.80
340 Technical Services				74.99
Total Purchased Professional and Technical Services				\$7,786.79
400 <u>Purchased Property Services</u>				
440 Rentals				2,412.52
Total Purchased Property Services				\$2,412.52
500 <u>Other Purchased Services</u>				
530 Communications	23.40	23.40		46.80
549 Other Advertising/Public Relations				4,951.04
550 Printing and Binding				3,236.67
580 Travel				1,016.46
Total Other Purchased Services	\$23.40	\$23.40		\$9,250.97
600 <u>Supplies</u>				
610 General Supplies				1,223.61
640 Books and Periodicals				394.49
650 Supplies & Fees – Technology Related				264.99
Total Supplies				\$1,883.09
700 <u>Property</u>				
766 Capitalized Technology Hardware and Equipment – Replacement				664.00
Total Property				\$664.00
800 <u>Other Objects</u>				
810 Dues and Fees				5,369.25
Total Other Objects				\$5,369.25
Total 2360 Office of the Superintendent / Executive Director Services	\$23.40	\$23.40		\$508,961.55

LEA : 108051003 Bedford Area SD

Printed 11/21/2017 9:26:58 AM

General Fund (10)

2370 Community Relations Services

Elementary

Secondary

Federal

Total

800 Other Objects

810 Dues and Fees

4,800.00

Total Other Objects

\$4,800.00

Total 2370 Community Relations Services

\$4,800.00

LEA : 108051003 Bedford Area SD

Printed 11/21/2017 9:26:58 AM

General Fund (10)

2380 Office of the Principal Services	Elementary	Secondary	Federal	Total
100 <u>Personnel Services – Salaries</u>				
100 Personnel Services – Salaries	332,744.49	415,001.81		747,746.30
Total Personnel Services – Salaries	\$332,744.49	\$415,001.81		\$747,746.30
200 <u>Personnel Services – Employee Benefits</u>				
210 Group Insurance – Contracted Provider	86,564.93	127,564.18		214,129.11
220 Social Security Contributions	25,090.72	30,758.85		55,849.57
230 PSERS Retirement Contributions	98,626.48	121,816.57		220,443.05
260 Workers' Compensation	2,229.13	2,763.41		4,992.54
292 Health Savings Accounts	14,838.00	19,812.00		34,650.00
Total Personnel Services – Employee Benefits	\$227,349.26	\$302,715.01		\$530,064.27
400 <u>Purchased Property Services</u>				
440 Rentals	2,326.63	2,297.70		4,624.33
Total Purchased Property Services	\$2,326.63	\$2,297.70		\$4,624.33
500 <u>Other Purchased Services</u>				
530 Communications	64.62	137.33		201.95
550 Printing and Binding	165.58	1,490.00		1,655.58
580 Travel	298.79			298.79
Total Other Purchased Services	\$528.99	\$1,627.33		\$2,156.32
600 <u>Supplies</u>				
610 General Supplies	2,871.35	7,696.42		10,567.77
640 Books and Periodicals	269.87	512.72		782.59
Total Supplies	\$3,141.22	\$8,209.14		\$11,350.36
800 <u>Other Objects</u>				
810 Dues and Fees	1,673.40	1,594.60		3,268.00
Total Other Objects	\$1,673.40	\$1,594.60		\$3,268.00
Total 2380 Office of the Principal Services	\$567,763.99	\$731,445.59		\$1,299,209.58

LEA : 108051003 Bedford Area SD

Printed 11/21/2017 9:26:58 AM

General Fund (10)				
2400 Support Services – Pupil Health	<u>Elementary</u>	<u>Secondary</u>	<u>Federal</u>	<u>Total</u>
100 <u>Personnel Services – Salaries</u>				
100 Personnel Services – Salaries				155,841.07
Total Personnel Services – Salaries				\$155,841.07
200 <u>Personnel Services – Employee Benefits</u>				
210 Group Insurance – Contracted Provider				6,811.94
220 Social Security Contributions				11,726.31
230 PSERS Retirement Contributions				43,373.38
260 Workers' Compensation				1,044.15
292 Health Savings Accounts				1,050.00
Total Personnel Services – Employee Benefits				\$64,005.78
300 <u>Purchased Professional and Technical Services</u>				
322 Professional Educational Services – Ius				1,637.60
329 Professional Educational Services – Other				110,187.68
330 Other Professional Services				559.00
Total Purchased Professional and Technical Services				\$112,384.28
500 <u>Other Purchased Services</u>				
580 Travel				24.50
Total Other Purchased Services				\$24.50
600 <u>Supplies</u>				
610 General Supplies				3,676.26
Total Supplies				\$3,676.26
Total 2400 Support Services – Pupil Health				\$335,931.89

LEA : 108051003 Bedford Area SD

Printed 11/21/2017 9:26:58 AM

General Fund (10)

2420 Medical Services

<u>Elementary</u>	<u>Secondary</u>	<u>Federal</u>	<u>Total</u>
-------------------	------------------	----------------	--------------

300 Purchased Professional and Technical Services

330 Other Professional Services				108.00
---------------------------------	--	--	--	--------

Total Purchased Professional and Technical Services				\$108.00
--	--	--	--	-----------------

Total 2420 Medical Services				\$108.00
------------------------------------	--	--	--	-----------------

LEA : 108051003 Bedford Area SD

Printed 11/21/2017 9:26:58 AM

General Fund (10)				
2440 Nursing Services	<u>Elementary</u>	<u>Secondary</u>	<u>Federal</u>	<u>Total</u>
100 <u>Personnel Services – Salaries</u>				
100 Personnel Services – Salaries				155,841.07
Total Personnel Services – Salaries				\$155,841.07
200 <u>Personnel Services – Employee Benefits</u>				
210 Group Insurance – Contracted Provider				6,811.94
220 Social Security Contributions				11,726.31
230 PSERS Retirement Contributions				43,373.38
260 Workers' Compensation				1,044.15
292 Health Savings Accounts				1,050.00
Total Personnel Services – Employee Benefits				\$64,005.78
300 <u>Purchased Professional and Technical Services</u>				
330 Other Professional Services				451.00
Total Purchased Professional and Technical Services				\$451.00
500 <u>Other Purchased Services</u>				
580 Travel				24.50
Total Other Purchased Services				\$24.50
600 <u>Supplies</u>				
610 General Supplies				3,676.26
Total Supplies				\$3,676.26
Total 2440 Nursing Services				\$223,998.61

LEA : 108051003 Bedford Area SD

Printed 11/21/2017 9:26:58 AM

General Fund (10)

2490 Other Health Services

Elementary Secondary Federal Total

300 Purchased Professional and Technical Services

322 Professional Educational Services – Ius 1,637.60

329 Professional Educational Services – Other 110,187.68

Total Purchased Professional and Technical Services \$111,825.28

Total 2490 Other Health Services \$111,825.28

LEA : 108051003 Bedford Area SD

Printed 11/21/2017 9:26:58 AM

General Fund (10)				
2500 Support Services – Business	<u>Elementary</u>	<u>Secondary</u>	<u>Federal</u>	<u>Total</u>
100 <u>Personnel Services – Salaries</u>				
100 Personnel Services – Salaries				165,717.08
Total Personnel Services – Salaries				\$165,717.08
200 <u>Personnel Services – Employee Benefits</u>				
210 Group Insurance – Contracted Provider				50,642.69
220 Social Security Contributions				12,337.72
230 PSERS Retirement Contributions				48,808.15
260 Workers' Compensation				1,119.29
292 Health Savings Accounts				7,150.00
299 All Other Employee Benefits				399.17
Total Personnel Services – Employee Benefits				\$120,457.02
300 <u>Purchased Professional and Technical Services</u>				
330 Other Professional Services				83,560.60
340 Technical Services				907.50
Total Purchased Professional and Technical Services				\$84,468.10
400 <u>Purchased Property Services</u>				
420 Utility Services				5,120.23
Total Purchased Property Services				\$5,120.23
500 <u>Other Purchased Services</u>				
520 Insurance – General				263.00
530 Communications				14,061.45
549 Other Advertising/Public Relations				986.08
550 Printing and Binding				1,964.39
Total Other Purchased Services				\$17,274.92
600 <u>Supplies</u>				
610 General Supplies				2,968.71
650 Supplies & Fees – Technology Related				12,445.00
Total Supplies				\$15,413.71
800 <u>Other Objects</u>				
810 Dues and Fees				4,562.15
Total Other Objects				\$4,562.15
Total 2500 Support Services – Business				\$413,013.21

LEA : 108051003 Bedford Area SD

Printed 11/21/2017 9:26:58 AM

General Fund (10)				
2510 Fiscal Services	<u>Elementary</u>	<u>Secondary</u>	<u>Federal</u>	<u>Total</u>
100 <u>Personnel Services – Salaries</u>				
100 Personnel Services – Salaries				165,717.08
Total Personnel Services – Salaries				\$165,717.08
200 <u>Personnel Services – Employee Benefits</u>				
210 Group Insurance – Contracted Provider				50,642.69
220 Social Security Contributions				12,337.72
230 PSERS Retirement Contributions				48,808.15
260 Workers' Compensation				1,119.29
292 Health Savings Accounts				7,150.00
299 All Other Employee Benefits				399.17
Total Personnel Services – Employee Benefits				\$120,457.02
300 <u>Purchased Professional and Technical Services</u>				
330 Other Professional Services				83,560.60
340 Technical Services				907.50
Total Purchased Professional and Technical Services				\$84,468.10
400 <u>Purchased Property Services</u>				
420 Utility Services				5,120.23
Total Purchased Property Services				\$5,120.23
500 <u>Other Purchased Services</u>				
520 Insurance – General				263.00
530 Communications				14,061.45
549 Other Advertising/Public Relations				986.08
550 Printing and Binding				1,964.39
Total Other Purchased Services				\$17,274.92
600 <u>Supplies</u>				
610 General Supplies				2,968.71
650 Supplies & Fees – Technology Related				12,445.00
Total Supplies				\$15,413.71
800 <u>Other Objects</u>				
810 Dues and Fees				4,562.15
Total Other Objects				\$4,562.15
Total 2510 Fiscal Services				\$413,013.21

LEA : 108051003 Bedford Area SD

Printed 11/21/2017 9:26:58 AM

General Fund (10)				
2511 Supervision of Fiscal Services - Head of Component	<u>Elementary</u>	<u>Secondary</u>	<u>Federal</u>	<u>Total</u>
100 <u>Personnel Services – Salaries</u>				
100 Personnel Services – Salaries				132,016.02
Total Personnel Services – Salaries				\$132,016.02
200 <u>Personnel Services – Employee Benefits</u>				
210 Group Insurance – Contracted Provider				33,204.47
220 Social Security Contributions				9,855.83
230 PSERS Retirement Contributions				38,687.76
260 Workers' Compensation				893.57
292 Health Savings Accounts				4,700.00
299 All Other Employee Benefits				399.17
Total Personnel Services – Employee Benefits				\$87,740.80
300 <u>Purchased Professional and Technical Services</u>				
330 Other Professional Services				83,560.60
340 Technical Services				907.50
Total Purchased Professional and Technical Services				\$84,468.10
400 <u>Purchased Property Services</u>				
420 Utility Services				5,120.23
Total Purchased Property Services				\$5,120.23
500 <u>Other Purchased Services</u>				
520 Insurance – General				263.00
530 Communications				14,061.45
549 Other Advertising/Public Relations				986.08
550 Printing and Binding				1,558.94
Total Other Purchased Services				\$16,869.47
600 <u>Supplies</u>				
610 General Supplies				2,361.99
650 Supplies & Fees – Technology Related				12,445.00
Total Supplies				\$14,806.99
800 <u>Other Objects</u>				
810 Dues and Fees				4,562.15
Total Other Objects				\$4,562.15
Total 2511 Supervision of Fiscal Services - Head of Component				\$345,583.76

LEA : 108051003 Bedford Area SD

Printed 11/21/2017 9:26:58 AM

General Fund (10)

2514 Payroll Services

	<u>Elementary</u>	<u>Secondary</u>	<u>Federal</u>	<u>Total</u>
100 <u>Personnel Services – Salaries</u>				
100 Personnel Services – Salaries				33,701.06
Total Personnel Services – Salaries				\$33,701.06
200 <u>Personnel Services – Employee Benefits</u>				
210 Group Insurance – Contracted Provider				17,438.22
220 Social Security Contributions				2,481.89
230 PSERS Retirement Contributions				10,120.39
260 Workers' Compensation				225.72
292 Health Savings Accounts				2,450.00
Total Personnel Services – Employee Benefits				\$32,716.22
500 <u>Other Purchased Services</u>				
550 Printing and Binding				405.45
Total Other Purchased Services				\$405.45
600 <u>Supplies</u>				
610 General Supplies				606.72
Total Supplies				\$606.72
Total 2514 Payroll Services				\$67,429.45

LEA : 108051003 Bedford Area SD

Printed 11/21/2017 9:26:58 AM

General Fund (10)				
2600 Operation and Maintenance of Plant Services	<u>Elementary</u>	<u>Secondary</u>	<u>Federal</u>	<u>Total</u>
100 <u>Personnel Services – Salaries</u>				
100 Personnel Services – Salaries				607,197.23
Total Personnel Services – Salaries				\$607,197.23
200 <u>Personnel Services – Employee Benefits</u>				
210 Group Insurance – Contracted Provider				303,648.61
220 Social Security Contributions				45,080.14
230 PSERS Retirement Contributions				181,643.38
260 Workers' Compensation				4,064.47
292 Health Savings Accounts				53,725.00
Total Personnel Services – Employee Benefits				\$588,161.60
300 <u>Purchased Professional and Technical Services</u>				
330 Other Professional Services				1,601.97
340 Technical Services				101,647.78
Total Purchased Professional and Technical Services				\$103,249.75
400 <u>Purchased Property Services</u>				
410 Cleaning Services				30,545.84
420 Utility Services				79,426.83
430 Repairs and Maintenance Services				(19,296.20)
440 Rentals				5,802.91
460 Extermination Services				330.17
Total Purchased Property Services				\$96,809.55
500 <u>Other Purchased Services</u>				
530 Communications				9,589.24
580 Travel				369.90
Total Other Purchased Services				\$9,959.14
600 <u>Supplies</u>				
610 General Supplies	49,754.99	67,961.36		117,716.35
620 Energy				494,643.56
Total Supplies	\$49,754.99	\$67,961.36		\$612,359.91
700 <u>Property</u>				
762 Capitalized Equipment - Replacement				20,817.51
Total Property				\$20,817.51
800 <u>Other Objects</u>				
810 Dues and Fees				802.84
Total Other Objects				\$802.84
Total 2600 Operation and Maintenance of Plant Services	\$49,754.99	\$67,961.36		\$2,039,357.53

LEA : 108051003 Bedford Area SD

Printed 11/21/2017 9:26:58 AM

General Fund (10)

2610 Supervision of Operation and Maintenance of Plant Services	Elementary	Secondary	Federal	Total
100 <u>Personnel Services – Salaries</u>				
100 Personnel Services – Salaries				47,697.97
Total Personnel Services – Salaries				\$47,697.97
200 <u>Personnel Services – Employee Benefits</u>				
210 Group Insurance – Contracted Provider				18,280.16
220 Social Security Contributions				3,705.39
230 PSERS Retirement Contributions				14,530.31
260 Workers' Compensation				327.29
292 Health Savings Accounts				2,725.00
Total Personnel Services – Employee Benefits				\$39,568.15
500 <u>Other Purchased Services</u>				
530 Communications				22.95
Total Other Purchased Services				\$22.95
600 <u>Supplies</u>				
610 General Supplies	61.60	225.58		287.18
Total Supplies	\$61.60	\$225.58		\$287.18
800 <u>Other Objects</u>				
810 Dues and Fees				82.62
Total Other Objects				\$82.62
Total 2610 Supervision of Operation and Maintenance of Plant Services	\$61.60	\$225.58		\$87,658.87

LEA : 108051003 Bedford Area SD

Printed 11/21/2017 9:26:58 AM

General Fund (10)

2611 Supervision of Operation and Maintenance of Plant Services – Head of Component	<u>Elementary</u>	<u>Secondary</u>	<u>Federal</u>	<u>Total</u>
100 <u>Personnel Services – Salaries</u>				
100 Personnel Services – Salaries				47,697.97
Total Personnel Services – Salaries				\$47,697.97
200 <u>Personnel Services – Employee Benefits</u>				
210 Group Insurance – Contracted Provider				18,280.16
220 Social Security Contributions				3,705.39
230 PSERS Retirement Contributions				14,530.31
260 Workers' Compensation				327.29
292 Health Savings Accounts				2,725.00
Total Personnel Services – Employee Benefits				\$39,568.15
500 <u>Other Purchased Services</u>				
530 Communications				22.95
Total Other Purchased Services				\$22.95
600 <u>Supplies</u>				
610 General Supplies	61.60	225.58		287.18
Total Supplies	\$61.60	\$225.58		\$287.18
800 <u>Other Objects</u>				
810 Dues and Fees				82.62
Total Other Objects				\$82.62
Total 2611 Supervision of Operation and Maintenance of Plant Services – Head of Component	\$61.60	\$225.58		\$87,658.87

LEA : 108051003 Bedford Area SD

Printed 11/21/2017 9:26:58 AM

General Fund (10)				
2620 Operation of Buildings Services	<u>Elementary</u>	<u>Secondary</u>	<u>Federal</u>	<u>Total</u>
100 <u>Personnel Services – Salaries</u>				
100 Personnel Services – Salaries				559,499.26
Total Personnel Services – Salaries				\$559,499.26
200 <u>Personnel Services – Employee Benefits</u>				
210 Group Insurance – Contracted Provider				285,368.45
220 Social Security Contributions				41,374.75
230 PSERS Retirement Contributions				167,113.07
260 Workers' Compensation				3,737.18
292 Health Savings Accounts				51,000.00
Total Personnel Services – Employee Benefits				\$548,593.45
300 <u>Purchased Professional and Technical Services</u>				
330 Other Professional Services				1,601.97
340 Technical Services				101,647.78
Total Purchased Professional and Technical Services				\$103,249.75
400 <u>Purchased Property Services</u>				
410 Cleaning Services				19,145.84
420 Utility Services				79,426.83
430 Repairs and Maintenance Services				3,261.39
440 Rentals				5,802.91
460 Extermination Services				330.17
Total Purchased Property Services				\$107,967.14
500 <u>Other Purchased Services</u>				
530 Communications				9,566.29
580 Travel				369.90
Total Other Purchased Services				\$9,936.19
600 <u>Supplies</u>				
610 General Supplies	49,164.36	65,249.43		114,413.79
620 Energy				493,978.02
Total Supplies	\$49,164.36	\$65,249.43		\$608,391.81
700 <u>Property</u>				
762 Capitalized Equipment - Replacement				13,380.51
Total Property				\$13,380.51
800 <u>Other Objects</u>				
810 Dues and Fees				685.22
Total Other Objects				\$685.22
Total 2620 Operation of Buildings Services	\$49,164.36	\$65,249.43		\$1,951,703.33

LEA : 108051003 Bedford Area SD

Printed 11/21/2017 9:26:58 AM

General Fund (10)				
2630 Care and Upkeep of Grounds Services	<u>Elementary</u>	<u>Secondary</u>	<u>Federal</u>	<u>Total</u>
400 <u>Purchased Property Services</u>				
410 Cleaning Services				11,400.00
430 Repairs and Maintenance Services				(22,557.59)
Total Purchased Property Services				(\$11,157.59)
600 <u>Supplies</u>				
610 General Supplies	529.03	2,486.35		3,015.38
620 Energy				665.54
Total Supplies	\$529.03	\$2,486.35		\$3,680.92
700 <u>Property</u>				
762 Capitalized Equipment - Replacement				7,437.00
Total Property				\$7,437.00
800 <u>Other Objects</u>				
810 Dues and Fees				35.00
Total Other Objects				\$35.00
Total 2630 Care and Upkeep of Grounds Services	\$529.03	\$2,486.35		(\$4.67)

LEA : 108051003 Bedford Area SD

Printed 11/21/2017 9:26:58 AM

General Fund (10)				
2700 Student Transportation Services				
	<u>Elementary</u>	<u>Secondary</u>	<u>Federal</u>	<u>Total</u>
100 <u>Personnel Services – Salaries</u>				
100 Personnel Services – Salaries				48,083.45
Total Personnel Services – Salaries				\$48,083.45
200 <u>Personnel Services – Employee Benefits</u>				
210 Group Insurance – Contracted Provider				17,873.50
220 Social Security Contributions				3,627.66
230 PSERS Retirement Contributions				14,291.63
260 Workers' Compensation				322.26
292 Health Savings Accounts				2,725.00
Total Personnel Services – Employee Benefits				\$38,840.05
300 <u>Purchased Professional and Technical Services</u>				
330 Other Professional Services				2,773.87
Total Purchased Professional and Technical Services				\$2,773.87
400 <u>Purchased Property Services</u>				
430 Repairs and Maintenance Services				6,016.84
Total Purchased Property Services				\$6,016.84
500 <u>Other Purchased Services</u>				
513 Contracted Carriers			63,575.79	1,991,366.04
516 Student Transportation Services From the IU				40,600.54
530 Communications				529.07
580 Travel				1,251.79
Total Other Purchased Services			\$63,575.79	\$2,033,747.44
600 <u>Supplies</u>				
610 General Supplies				7,213.04
620 Energy				6,048.54
Total Supplies				\$13,261.58
700 <u>Property</u>				
762 Capitalized Equipment - Replacement				(9,362.50)
Total Property				(\$9,362.50)
800 <u>Other Objects</u>				
810 Dues and Fees				82.60
Total Other Objects				\$82.60
Total 2700 Student Transportation Services			\$63,575.79	\$2,133,443.33

LEA : 108051003 Bedford Area SD

Printed 11/21/2017 9:26:58 AM

General Fund (10)				
2710 Supervision of Student Transportation Services	<u>Elementary</u>	<u>Secondary</u>	<u>Federal</u>	<u>Total</u>
100 <u>Personnel Services – Salaries</u>				
100 Personnel Services – Salaries				47,822.45
Total Personnel Services – Salaries				\$47,822.45
200 <u>Personnel Services – Employee Benefits</u>				
210 Group Insurance – Contracted Provider				17,873.50
220 Social Security Contributions				3,607.70
230 PSERS Retirement Contributions				14,213.25
260 Workers' Compensation				320.51
292 Health Savings Accounts				2,725.00
Total Personnel Services – Employee Benefits				\$38,739.96
500 <u>Other Purchased Services</u>				
530 Communications				529.07
580 Travel				429.83
Total Other Purchased Services				\$958.90
600 <u>Supplies</u>				
610 General Supplies				1,400.86
Total Supplies				\$1,400.86
800 <u>Other Objects</u>				
810 Dues and Fees				82.60
Total Other Objects				\$82.60
Total 2710 Supervision of Student Transportation Services				\$89,004.77

LEA : 108051003 Bedford Area SD

Printed 11/21/2017 9:26:58 AM

General Fund (10)				
2711 Supervision of Student Transportation Services – Head of Component	<u>Elementary</u>	<u>Secondary</u>	<u>Federal</u>	<u>Total</u>
100 <u>Personnel Services – Salaries</u>				
100 Personnel Services – Salaries				47,822.45
Total Personnel Services – Salaries				\$47,822.45
200 <u>Personnel Services – Employee Benefits</u>				
210 Group Insurance – Contracted Provider				17,873.50
220 Social Security Contributions				3,607.70
230 PSERS Retirement Contributions				14,213.25
260 Workers' Compensation				320.51
292 Health Savings Accounts				2,725.00
Total Personnel Services – Employee Benefits				\$38,739.96
500 <u>Other Purchased Services</u>				
530 Communications				529.07
580 Travel				429.83
Total Other Purchased Services				\$958.90
600 <u>Supplies</u>				
610 General Supplies				1,400.86
Total Supplies				\$1,400.86
800 <u>Other Objects</u>				
810 Dues and Fees				82.60
Total Other Objects				\$82.60
Total 2711 Supervision of Student Transportation Services – Head of Component				\$89,004.77

LEA : 108051003 Bedford Area SD

Printed 11/21/2017 9:26:58 AM

General Fund (10)				
2720 Vehicle Operation Services				
	<u>Elementary</u>	<u>Secondary</u>	<u>Federal</u>	<u>Total</u>
100 <u>Personnel Services – Salaries</u>				
100 Personnel Services – Salaries				261.00
Total Personnel Services – Salaries				\$261.00
200 <u>Personnel Services – Employee Benefits</u>				
220 Social Security Contributions				19.96
230 PSERS Retirement Contributions				78.38
260 Workers’ Compensation				1.75
Total Personnel Services – Employee Benefits				\$100.09
300 <u>Purchased Professional and Technical Services</u>				
330 Other Professional Services				2,773.87
Total Purchased Professional and Technical Services				\$2,773.87
500 <u>Other Purchased Services</u>				
513 Contracted Carriers			63,575.79	1,889,341.04
516 Student Transportation Services From the IU				40,600.54
580 Travel				821.96
Total Other Purchased Services			\$63,575.79	\$1,930,763.54
600 <u>Supplies</u>				
610 General Supplies				3,081.53
Total Supplies				\$3,081.53
700 <u>Property</u>				
762 Capitalized Equipment - Replacement				(9,362.50)
Total Property				(\$9,362.50)
Total 2720 Vehicle Operation Services			\$63,575.79	\$1,927,617.53

LEA : 108051003 Bedford Area SD

Printed 11/21/2017 9:26:58 AM

General Fund (10)				
2740 Vehicle Servicing and Maintenance Services	<u>Elementary</u>	<u>Secondary</u>	<u>Federal</u>	<u>Total</u>
400 <u>Purchased Property Services</u>				
430 Repairs and Maintenance Services				6,016.84
Total Purchased Property Services				\$6,016.84
600 <u>Supplies</u>				
610 General Supplies				2,730.65
620 Energy				6,048.54
Total Supplies				\$8,779.19
Total 2740 Vehicle Servicing and Maintenance Services				\$14,796.03

LEA : 108051003 Bedford Area SD

Printed 11/21/2017 9:26:58 AM

General Fund (10)

2750 Nonpublic Transportation	<u>Elementary</u>	<u>Secondary</u>	<u>Federal</u>	<u>Total</u>
500 <u>Other Purchased Services</u>				
513 Contracted Carriers				102,025.00
Total Other Purchased Services				\$102,025.00
Total 2750 Nonpublic Transportation				\$102,025.00

LEA : 108051003 Bedford Area SD

Printed 11/21/2017 9:26:58 AM

General Fund (10)				
2800 Support Services – Central				
	<u>Elementary</u>	<u>Secondary</u>	<u>Federal</u>	<u>Total</u>
100 <u>Personnel Services – Salaries</u>				
100 Personnel Services – Salaries			21,436.28	131,858.81
Total Personnel Services – Salaries			\$21,436.28	\$131,858.81
200 <u>Personnel Services – Employee Benefits</u>				
210 Group Insurance – Contracted Provider			18,539.66	52,751.05
220 Social Security Contributions			1,578.04	9,909.43
230 PSERS Retirement Contributions			6,437.40	39,597.23
240 Tuition Reimbursement				32,082.10
260 Workers' Compensation			143.53	883.26
292 Health Savings Accounts			3,000.00	9,850.00
Total Personnel Services – Employee Benefits			\$29,698.63	\$145,073.07
300 <u>Purchased Professional and Technical Services</u>				
324 Professional Educational Services – Employee Training and Development Services				5,846.66
340 Technical Services				1,472.75
Total Purchased Professional and Technical Services				\$7,319.41
400 <u>Purchased Property Services</u>				
430 Repairs and Maintenance Services				51.94
440 Rentals			2,250.00	2,250.00
Total Purchased Property Services			\$2,250.00	\$2,301.94
500 <u>Other Purchased Services</u>				
530 Communications				130.76
580 Travel				3,610.79
Total Other Purchased Services				\$3,741.55
600 <u>Supplies</u>				
610 General Supplies			10,570.98	20,124.41
650 Supplies & Fees – Technology Related				12,846.55
Total Supplies			\$10,570.98	\$32,970.96
700 <u>Property</u>				
762 Capitalized Equipment - Replacement				16,947.97
Total Property				\$16,947.97
800 <u>Other Objects</u>				
810 Dues and Fees				194.50
Total Other Objects				\$194.50
Total 2800 Support Services – Central			\$63,955.89	\$340,408.21

LEA : 108051003 Bedford Area SD

Printed 11/21/2017 9:26:58 AM

General Fund (10)

2810 Planning, Research, Development and Evaluation Services	<u>Elementary</u>	<u>Secondary</u>	<u>Federal</u>	<u>Total</u>
100 <u>Personnel Services – Salaries</u>				
100 Personnel Services – Salaries				110,422.53
Total Personnel Services – Salaries				\$110,422.53
200 <u>Personnel Services – Employee Benefits</u>				
210 Group Insurance – Contracted Provider				34,211.39
220 Social Security Contributions				8,331.39
230 PSERS Retirement Contributions				33,159.83
260 Workers' Compensation				739.73
292 Health Savings Accounts				6,850.00
Total Personnel Services – Employee Benefits				\$83,292.34
300 <u>Purchased Professional and Technical Services</u>				
324 Professional Educational Services – Employee Training and Development Services				806.66
340 Technical Services				1,472.75
Total Purchased Professional and Technical Services				\$2,279.41
400 <u>Purchased Property Services</u>				
430 Repairs and Maintenance Services				51.94
Total Purchased Property Services				\$51.94
500 <u>Other Purchased Services</u>				
530 Communications				130.76
Total Other Purchased Services				\$130.76
600 <u>Supplies</u>				
610 General Supplies				9,553.43
650 Supplies & Fees – Technology Related				12,846.55
Total Supplies				\$22,399.98
700 <u>Property</u>				
762 Capitalized Equipment - Replacement				16,947.97
Total Property				\$16,947.97
800 <u>Other Objects</u>				
810 Dues and Fees				194.50
Total Other Objects				\$194.50
Total 2810 Planning, Research, Development and Evaluation Services				\$235,719.43

LEA : 108051003 Bedford Area SD

Printed 11/21/2017 9:26:58 AM

General Fund (10)

2830 Staff Services

Elementary Secondary Federal Total

200 <u>Personnel Services – Employee Benefits</u>				
240 Tuition Reimbursement				32,082.10
Total Personnel Services – Employee Benefits				\$32,082.10
300 <u>Purchased Professional and Technical Services</u>				
324 Professional Educational Services – Employee Training and Development Services				5,040.00
Total Purchased Professional and Technical Services				\$5,040.00
500 <u>Other Purchased Services</u>				
580 Travel				3,610.79
Total Other Purchased Services				\$3,610.79
Total 2830 Staff Services				\$40,732.89

LEA : 108051003 Bedford Area SD

Printed 11/21/2017 9:26:58 AM

General Fund (10)

2834 Staff Development Services – Non-Instructional, Certified Staff Only	<u>Elementary</u>	<u>Secondary</u>	<u>Federal</u>	<u>Total</u>
200 <u>Personnel Services – Employee Benefits</u>				
240 Tuition Reimbursement				32,082.10
Total Personnel Services – Employee Benefits				\$32,082.10
300 <u>Purchased Professional and Technical Services</u>				
324 Professional Educational Services – Employee Training and Development Services				3,180.00
Total Purchased Professional and Technical Services				\$3,180.00
500 <u>Other Purchased Services</u>				
580 Travel				1,129.41
Total Other Purchased Services				\$1,129.41
Total 2834 Staff Development Services – Non-Instructional, Certified Staff Only				\$36,391.51

LEA : 108051003 Bedford Area SD

Printed 11/21/2017 9:26:58 AM

General Fund (10)

2836 Staff Development Services – Non-Instructional, Non-Certified Staff Only	<u>Elementary</u>	<u>Secondary</u>	<u>Federal</u>	<u>Total</u>
300 <u>Purchased Professional and Technical Services</u>				
324 Professional Educational Services – Employee Training and Development Services				1,860.00
Total Purchased Professional and Technical Services				\$1,860.00
500 <u>Other Purchased Services</u>				
580 Travel				2,481.38
Total Other Purchased Services				\$2,481.38
Total 2836 Staff Development Services – Non-Instructional, Non-Certified Staff Only				\$4,341.38

LEA : 108051003 Bedford Area SD

Printed 11/21/2017 9:26:58 AM

General Fund (10)

2850 State and Federal Agency Liaison Services	<u>Elementary</u>	<u>Secondary</u>	<u>Federal</u>	<u>Total</u>
100 <u>Personnel Services – Salaries</u>				
100 Personnel Services – Salaries			21,436.28	21,436.28
Total Personnel Services – Salaries			\$21,436.28	\$21,436.28
200 <u>Personnel Services – Employee Benefits</u>				
210 Group Insurance – Contracted Provider			18,539.66	18,539.66
220 Social Security Contributions			1,578.04	1,578.04
230 PSERS Retirement Contributions			6,437.40	6,437.40
260 Workers' Compensation			143.53	143.53
292 Health Savings Accounts			3,000.00	3,000.00
Total Personnel Services – Employee Benefits			\$29,698.63	\$29,698.63
400 <u>Purchased Property Services</u>				
440 Rentals			2,250.00	2,250.00
Total Purchased Property Services			\$2,250.00	\$2,250.00
600 <u>Supplies</u>				
610 General Supplies			10,570.98	10,570.98
Total Supplies			\$10,570.98	\$10,570.98
Total 2850 State and Federal Agency Liaison Services			\$63,955.89	\$63,955.89

LEA : 108051003 Bedford Area SD

Printed 11/21/2017 9:26:58 AM

General Fund (10)

2900 Other Support Services	<u>Elementary</u>	<u>Secondary</u>	<u>Federal</u>	<u>Total</u>
200 <u>Personnel Services – Employee Benefits</u>				
299 All Other Employee Benefits				12,750.00
Total Personnel Services – Employee Benefits				\$12,750.00
500 <u>Other Purchased Services</u>				
595 IU Payments By Withholding				10,402.18
Total Other Purchased Services				\$10,402.18
800 <u>Other Objects</u>				
899 Pass-Through Funds			338,314.83	478,914.83
Total Other Objects			\$338,314.83	\$478,914.83
Total 2900 Other Support Services			\$338,314.83	\$502,067.01

LEA : 108051003 Bedford Area SD

Printed 11/21/2017 9:26:58 AM

General Fund (10)

2910 Support Services Not Listed Elsewhere In the 2000 Series

Elementary Secondary Federal Total

200 Personnel Services – Employee Benefits

299 All Other Employee Benefits 12,750.00

Total Personnel Services – Employee Benefits \$12,750.00

500 Other Purchased Services

595 IU Payments By Withholding 10,402.18

Total Other Purchased Services \$10,402.18

Total 2910 Support Services Not Listed Elsewhere In the 2000 Series \$23,152.18

LEA : 108051003 Bedford Area SD

Printed 11/21/2017 9:26:58 AM

General Fund (10)

2990 Pass-Through Funds

800 Other Objects

899 Pass-Through Funds	<u>Elementary</u>	<u>Secondary</u>	<u>Federal</u>	<u>Total</u>
			338,314.83	478,914.83
Total Other Objects			\$338,314.83	\$478,914.83
Total 2990 Pass-Through Funds			\$338,314.83	\$478,914.83

LEA : 108051003 Bedford Area SD

Printed 11/21/2017 9:27:01 AM

General Fund (10)	
3000 Operation of Non-Instructional Services	<u>Total</u>
100 <u>Personnel Services – Salaries</u>	
100 Personnel Services – Salaries	232,149.01
Total Personnel Services – Salaries	\$232,149.01
200 <u>Personnel Services – Employee Benefits</u>	
210 Group Insurance – Contracted Provider	68.77
220 Social Security Contributions	17,580.82
230 PSERS Retirement Contributions	42,154.65
250 Unemployment Compensation	635.44
260 Workers’ Compensation	1,555.35
Total Personnel Services – Employee Benefits	\$61,995.03
300 <u>Purchased Professional and Technical Services</u>	
329 Professional Educational Services – Other	2,940.00
330 Other Professional Services	17,967.50
350 Security / Safety Services	224.00
Total Purchased Professional and Technical Services	\$21,131.50
500 <u>Other Purchased Services</u>	
520 Insurance – General	21,920.00
530 Communications	15,332.52
550 Printing and Binding	1,051.65
580 Travel	31,043.65
591 Services Purchased Locally	9,835.03
Total Other Purchased Services	\$79,182.85
600 <u>Supplies</u>	
610 General Supplies	72,265.31
620 Energy	680.00
630 Food	4,727.67
Total Supplies	\$77,672.98
800 <u>Other Objects</u>	
810 Dues and Fees	1,177.50
860 Grants To Municipal and Community Service Organizations	22,500.00
Total Other Objects	\$23,677.50
Total 3000 Operation of Non-Instructional Services	\$495,808.87

LEA : 108051003 Bedford Area SD

Printed 11/21/2017 9:27:01 AM

General Fund (10)				
3200 Student Activities	<u>Elementary</u>	<u>Secondary</u>	<u>Federal</u>	<u>Total</u>
100 <u>Personnel Services – Salaries</u>				
100 Personnel Services – Salaries				222,766.07
Total Personnel Services – Salaries				\$222,766.07
200 <u>Personnel Services – Employee Benefits</u>				
210 Group Insurance – Contracted Provider				10.42
220 Social Security Contributions				16,873.10
230 PSERS Retirement Contributions				41,198.15
250 Unemployment Compensation				635.44
260 Workers' Compensation				1,492.50
Total Personnel Services – Employee Benefits				\$60,209.61
300 <u>Purchased Professional and Technical Services</u>				
330 Other Professional Services				17,967.50
350 Security / Safety Services				224.00
Total Purchased Professional and Technical Services				\$18,191.50
500 <u>Other Purchased Services</u>				
520 Insurance – General				21,920.00
530 Communications				15,332.52
550 Printing and Binding				1,051.65
580 Travel				31,043.65
591 Services Purchased Locally			9,835.03	9,835.03
Total Other Purchased Services			\$9,835.03	\$79,182.85
600 <u>Supplies</u>				
610 General Supplies				71,871.02
620 Energy				680.00
630 Food				3,949.36
Total Supplies				\$76,500.38
800 <u>Other Objects</u>				
810 Dues and Fees				1,177.50
Total Other Objects				\$1,177.50
Total 3200 Student Activities			\$9,835.03	\$458,027.91

LEA : 108051003 Bedford Area SD

Printed 11/21/2017 9:27:01 AM

General Fund (10)				
3300 Community Services	<u>Elementary</u>	<u>Secondary</u>	<u>Federal</u>	<u>Total</u>
100 <u>Personnel Services – Salaries</u>				
100 Personnel Services – Salaries				9,382.94
Total Personnel Services – Salaries				\$9,382.94
200 <u>Personnel Services – Employee Benefits</u>				
210 Group Insurance – Contracted Provider				58.35
220 Social Security Contributions				707.72
230 PSERS Retirement Contributions				956.50
260 Workers' Compensation				62.85
Total Personnel Services – Employee Benefits				\$1,785.42
300 <u>Purchased Professional and Technical Services</u>				
329 Professional Educational Services – Other				2,940.00
Total Purchased Professional and Technical Services				\$2,940.00
600 <u>Supplies</u>				
610 General Supplies			160.00	394.29
630 Food			375.00	778.31
Total Supplies			\$535.00	\$1,172.60
800 <u>Other Objects</u>				
860 Grants To Municipal and Community Service Organizations				22,500.00
Total Other Objects				\$22,500.00
Total 3300 Community Services			\$535.00	\$37,780.96

LEA : 108051003 Bedford Area SD

Printed 11/21/2017 9:27:05 AM

General Fund (10)

5000 Other Expenditures and Financing Uses		<u>Total</u>
800 <u>Other Objects</u>		
830 Interest		522,256.28
880 Refunds of Prior Years' Receipts		9,042.03
Total Other Objects		\$531,298.31
900 <u>Other Uses of Funds</u>		
910 Redemption of Principal		1,555,000.00
933 Athletic Fund Transfers		61,695.00
Total Other Uses of Funds		\$1,616,695.00
Total 5000 Other Expenditures and Financing Uses		\$2,147,993.31

LEA : 108051003 Bedford Area SD

Printed 11/21/2017 9:27:05 AM

General Fund (10)

5100 Debt Service / Other Expenditures and Financing Uses	<u>Elementary</u>	<u>Secondary</u>	<u>Federal</u>	<u>Total</u>
800 <u>Other Objects</u>				
830 Interest				522,256.28
880 Refunds of Prior Years' Receipts				9,042.03
Total Other Objects				\$531,298.31
900 <u>Other Uses of Funds</u>				
910 Redemption of Principal				1,555,000.00
Total Other Uses of Funds				\$1,555,000.00
Total 5100 Debt Service / Other Expenditures and Financing Uses				\$2,086,298.31

LEA : 108051003 Bedford Area SD

Printed 11/21/2017 9:27:05 AM

General Fund (10)				
5110 Debt Service	<u>Elementary</u>	<u>Secondary</u>	<u>Federal</u>	<u>Total</u>
800 <u>Other Objects</u>				
830 Interest				522,256.28
Total Other Objects				\$522,256.28
900 <u>Other Uses of Funds</u>				
910 Redemption of Principal				1,555,000.00
Total Other Uses of Funds				\$1,555,000.00
Total 5110 Debt Service				\$2,077,256.28

LEA : 108051003 Bedford Area SD

Printed 11/21/2017 9:27:05 AM

General Fund (10)

5130 Refund of Prior Year Revenues / Receipts	<u>Elementary</u>	<u>Secondary</u>	<u>Federal</u>	<u>Total</u>
800 <u>Other Objects</u>				
880 Refunds of Prior Years' Receipts				9,042.03
Total Other Objects				\$9,042.03
Total 5130 Refund of Prior Year Revenues / Receipts				\$9,042.03

LEA : 108051003 Bedford Area SD

Printed 11/21/2017 9:27:05 AM

General Fund (10)

5200 Interfund Transfers – Out	<u>Elementary</u>	<u>Secondary</u>	<u>Federal</u>	<u>Total</u>
900 <u>Other Uses of Funds</u>				
933 Athletic Fund Transfers				61,695.00
Total Other Uses of Funds				\$61,695.00
Total 5200 Interfund Transfers – Out				\$61,695.00

LEA : 108051003 Bedford Area SD

Printed 11/21/2017 9:27:05 AM

General Fund (10)

5220 Special Revenue Fund Transfers	<u>Elementary</u>	<u>Secondary</u>	<u>Federal</u>	<u>Total</u>
900 <u>Other Uses of Funds</u>				
933 Athletic Fund Transfers				61,695.00
Total Other Uses of Funds				\$61,695.00
Total 5220 Special Revenue Fund Transfers				\$61,695.00

LEA : 108051003 Bedford Area SD

Printed 11/21/2017 9:27:02 AM

Athletic / School-Sponsored Extra Curricular Activities Fund (29)

3000 Operation of Non-Instructional Services		<u>Total</u>
500 <u>Other Purchased Services</u>		
599 Other Miscellaneous Purchased Services		24,566.00
Total Other Purchased Services		\$24,566.00
600 <u>Supplies</u>		
610 General Supplies		118,643.00
Total Supplies		\$118,643.00
Total 3000 Operation of Non-Instructional Services		\$143,209.00

LEA : 108051003 Bedford Area SD

Printed 11/21/2017 9:27:02 AM

Athletic / School-Sponsored Extra Curricular Activities Fund (29)

3200 Student Activities	<u>Elementary</u>	<u>Secondary</u>	<u>Federal</u>	<u>Total</u>
500 <u>Other Purchased Services</u>				
599 Other Miscellaneous Purchased Services				24,566.00
Total Other Purchased Services				\$24,566.00
600 <u>Supplies</u>				
610 General Supplies				118,643.00
Total Supplies				\$118,643.00
Total 3200 Student Activities				\$143,209.00

LEA : 108051003 Bedford Area SD

Printed 11/21/2017 9:27:04 AM

Other Capital Projects Fund (39)

4000 Facilities Acquisition, Construction and Improvement Services

Total

700 <u>Property</u>	
762 Capitalized Equipment - Replacement	115,723.00
766 Capitalized Technology Hardware and Equipment – Replacement	218,475.00
Total Property	\$334,198.00
Total 4000 Facilities Acquisition, Construction and Improvement Services	\$334,198.00

LEA : 108051003 Bedford Area SD

Printed 11/21/2017 9:27:04 AM

Other Capital Projects Fund (39)

4600 Existing Building Improvement Services

Elementary Secondary Federal Total

700 <u>Property</u>				
762 Capitalized Equipment - Replacement				115,723.00
766 Capitalized Technology Hardware and Equipment – Replacement				218,475.00
Total Property				\$334,198.00
Total 4600 Existing Building Improvement Services				\$334,198.00

LEA : 108051003 Bedford Area SD

Printed 11/21/2017 9:27:08 AM

	<u>General Fund(10)</u>	<u>Public Purpose Trust(27)</u>	<u>Other Compt Approved</u> <u>(28)</u>	<u>Athletic / Activity(29)</u>	<u>Capital Reserve (690.</u> <u>1850)(31)</u>
1000 <u>Instruction</u>					
1100 Regular Programs - Elementary / Secondary	12,064,583.54				
1200 Special Programs - Elementary / Secondary	3,197,986.73				
1300 Vocational Education	1,143,172.91				
1400 Other Instructional Programs - Elementary / Secondary	375,353.80				
1500 Nonpublic School Programs	4,978.97				
1800 Pre-Kindergarten	5,421.33				
Total Instruction	\$16,791,497.28				
2000 <u>Support Services</u>					
2100 Support Services - Students	732,301.26				
2200 Support Services - Instructional Staff	760,892.28				
2300 Support Services - Administration	2,117,899.48				
2400 Support Services - Pupil Health	335,931.89				
2500 Support Services - Business	413,013.21				
2600 Operation and Maintenance of Plant Services	2,039,357.53				
2700 Student Transportation Services	2,133,443.33				
2800 Support Services - Central	340,408.21				
2900 Other Support Services	502,067.01				
Total Support Services	\$9,375,314.20				
3000 <u>Operation of Non-Instructional Services</u>					
3200 Student Activities	458,027.91			143,209.00	
3300 Community Services	37,780.96				
Total Operation of Non-Instructional Services	\$495,808.87			\$143,209.00	
4000 <u>Facilities Acquisition, Construction and Improvement Services</u>					
4600 Existing Building Improvement Services					
Total Facilities Acquisition, Construction and Improvement Services					
5000 <u>Other Expenditures and Financing Uses</u>					
5100 Debt Service / Other Expenditures and Financing Uses	2,086,298.31				
5200 Interfund Transfers - Out	61,695.00				
Total Other Expenditures and Financing Uses	\$2,147,993.31				
TOTAL ACTUAL EXPENDITURES & OTHER FINANCING USES	\$28,810,613.66			\$143,209.00	

LEA : 108051003 Bedford Area SD

Printed 11/21/2017 9:27:08 AM

	<u>Capital Reserve (1431)(32)</u>	<u>Other Capital Projects Fund(39)</u>	<u>Debt Service(40)</u>	<u>Permanent(90)</u>	<u>Total</u>
1000 <u>Instruction</u>					
1100 Regular Programs - Elementary / Secondary					12,064,583.54
1200 Special Programs - Elementary / Secondary					3,197,986.73
1300 Vocational Education					1,143,172.91
1400 Other Instructional Programs - Elementary / Secondary					375,353.80
1500 Nonpublic School Programs					4,978.97
1800 Pre-Kindergarten					5,421.33
Total Instruction					\$16,791,497.28
2000 <u>Support Services</u>					
2100 Support Services - Students					732,301.26
2200 Support Services - Instructional Staff					760,892.28
2300 Support Services - Administration					2,117,899.48
2400 Support Services - Pupil Health					335,931.89
2500 Support Services - Business					413,013.21
2600 Operation and Maintenance of Plant Services					2,039,357.53
2700 Student Transportation Services					2,133,443.33
2800 Support Services - Central					340,408.21
2900 Other Support Services					502,067.01
Total Support Services					\$9,375,314.20
3000 <u>Operation of Non-Instructional Services</u>					
3200 Student Activities					601,236.91
3300 Community Services					37,780.96
Total Operation of Non-Instructional Services					\$639,017.87
4000 <u>Facilities Acquisition, Construction and Improvement Services</u>					
4600 Existing Building Improvement Services		334,198.00			334,198.00
Total Facilities Acquisition, Construction and Improvement Services		\$334,198.00			\$334,198.00
5000 <u>Other Expenditures and Financing Uses</u>					
5100 Debt Service / Other Expenditures and Financing Uses					2,086,298.31
5200 Interfund Transfers - Out					61,695.00
Total Other Expenditures and Financing Uses					\$2,147,993.31
TOTAL ACTUAL EXPENDITURES & OTHER FINANCING USES		\$334,198.00			\$29,288,020.66

LEA : 108051003 Bedford Area SD

Printed 11/21/2017 9:27:13 AM

PSERS Salary Data (Salary Data should relate to the General Fund only)

Amount	Description	Amount
	Total Salary Base for salaries subject to PSERS withholding	10,409,334.62
	Total Federally Funded salaries subject to PSERS withholding	673,367.77

Title I Expenditure Data

Amount	Description	Amount
	Expenditures Funded with Current Title I Funds	415,022.40
	Expenditures Funded with Carry over Title I Funds	58,308.44
Total	Title I Expenditure Data	\$473,330.84

Title I ARRA Amount

Amount	Description	Amount
	Portion of Total Title I Expenditures funded with ARRA Title I	

Benefits for Staff Relative to Collective Bargaining Agreements

	OBJECT	COVERED	NOT COVERED	TOTAL
10 General Fund	No Self Insurance data to report			
	211 Medical Insurance	2,205,058.62	227,729.84	2,432,788.46
	212 Dental Insurance	100,986.08	12,216.04	113,202.12
	215 Eye Care Insurance			
	216 Prescription Insurance			
	271 Self-Insurance Medical Benefits			
	272 Self-Insurance Dental Benefits			
	275 Self-Insurance Eye Care Benefits			
	276 Self-Insurance Prescription Benefits			
	FUND TOTAL	\$2,306,044.70	\$239,945.88	\$2,545,990.58
50 Enterprise Fund	No Self Insurance data to report			
	211 Medical Insurance	142,658.28	17,430.00	160,088.28
	212 Dental Insurance	2,862.12	795.36	3,657.48
	215 Eye Care Insurance			
	216 Prescription Insurance			
	271 Self-Insurance Medical Benefits			
	272 Self-Insurance Dental Benefits			
	275 Self-Insurance Eye Care Benefits			
	276 Self-Insurance Prescription Benefits			
	FUND TOTAL	\$145,520.40	\$18,225.36	\$163,745.76
60 Internal Service Fund	No Self Insurance data to report			
	211 Medical Insurance			
	212 Dental Insurance			
	215 Eye Care Insurance			
	216 Prescription Insurance			
	271 Self-Insurance Medical Benefits			
	272 Self-Insurance Dental Benefits			
	275 Self-Insurance Eye Care Benefits			
	276 Self-Insurance Prescription Benefits			
	FUND TOTAL			
Total of All Funds		\$2,451,565.10	\$258,171.24	\$2,709,736.34

LEA : 108051003 Bedford Area SD

Printed 11/21/2017 9:27:15 AM

Function	Special Education (Prior Year)	Nonspecial Education (Prior Year)	Total (Prior Year)	Special Education (Current Year)	Nonspecial Education (Current Year)	Total (Current Year)
2120 Guidance Services	106,504.98	372,137.55	478,642.53	108,314.14	395,451.17	503,765.31
2140 Psychological Services	101,533.84	36,353.83	137,887.67	103,355.20	41,819.43	145,174.63
2150 Speech Pathology and Audiology Services	6,380.00		6,380.00	5,280.00		5,280.00
2160 Social Work Services	1,013.31		1,013.31	532.30		532.30
2260 Instruction and Curriculum Development Services						
2350 Legal and Accounting Services	1,868.08	9,807.42	11,675.50	375.84	1,973.16	2,349.00
2420 Medical Services					108.00	108.00
2440 Nursing Services	34,379.07	180,491.68	214,870.75	35,839.78	188,158.83	223,998.61
2700 Student Transportation Services	715,529.93	1,467,252.69	2,182,782.62	733,145.26	1,400,298.07	2,133,443.33
Total	\$967,209.21	\$2,066,043.17	\$3,033,252.38	\$986,842.52	\$2,027,808.66	\$3,014,651.18

LEA : 108051003 Bedford Area SD

Printed 11/21/2017 9:27:16 AM

(PRINCIPAL AMOUNTS ONLY)								
<u>GOVERNMENTAL FUNDS/ ACTIVITIES</u>	Short-Term Borrowing	General Obligation Bonds/Notes	Authority Building Obligations	Other Long-Term Debt	Other Post- Employment Benefits (OPEB)	Compensated Absences	Net Pension Liability	Total
1. Debt at Beginning of Fiscal Year		21,075,000.00			291,635.00	577,305.00	34,609,000.00	56,552,940.00
2. Additional Debt Incurred During Year					704,195.00	100,953.00	4,838,000.00	5,643,148.00
3. Retirements and Repayments		1,555,000.00			367,501.00			1,922,501.00
4. Debt at End of Fiscal Year		19,520,000.00			628,329.00	678,258.00	39,447,000.00	60,273,587.00
5. Accreted Interest at End Of Fiscal Year								
6. Total Debt and Accreted Interest		19,520,000.00			628,329.00	678,258.00	39,447,000.00	60,273,587.00
7. Current Portion P&I - Due within 1 year		1,936,859.38						1,936,859.38
8. Interest Paid during current fiscal year		522,256.28						522,256.28

(PRINCIPAL AMOUNTS ONLY)							
<u>PROPRIETARY FUNDS</u>							
1. Debt at Beginning of Fiscal Year							
2. Additional Debt Incurred During Year							
3. Retirements and Repayments							
4. Debt at End of Fiscal Year							
5. Accreted Interest at End Of Fiscal Year							
6. Total Debt and Accreted Interest							
7. Current Portion P&I - Due within 1 year							
8. Interest Paid during current fiscal year							

LEA : 108051003 Bedford Area SD

Printed 11/21/2017 9:27:16 AM

Total Principal and Interest Payments Made by Your School - All Funds

Function	Fund		Principal (910)	Principal (920)	Interest (830)	Total (Principal +Interest)	Misc Other Uses (990)
5110	10	General Fund	1,555,000.00		522,256.28	2,077,256.28	
5110	20	Special Revenue Funds					
5110	30	Capital Projects Funds					
5110	40	Debt Service Fund					
5110	90	Permanent Fund					
5120	10	General Fund					
5120	20	Special Revenue Funds					
5120	30	Capital Projects Funds					
5120	40	Debt Service Fund					
Total Debt Payments - Governmental Funds			\$1,555,000.00		\$522,256.28	\$2,077,256.28	

Function	Fund		Principal (910)	Principal (920)	Interest (830)	Total (Principal +Interest)
5110	50	Enterprise Fund				
5110	60	Internal Service Fund				
5120	50	Enterprise Fund				
5120	60	Internal Service Fund				
Total Debt Payments - Proprietary Funds						

LEA : 108051003 Bedford Area SD

Printed 11/21/2017 9:27:16 AM

Debt Details
Governmental Funds/ Activities

Debt Category	Debt Issue Date (MM/YYYY)	Principal Amounts Only				Current Portion Due Within One Year (Principal and Interest)	Interest Paid During Fiscal Year
		Debt at Beginning of Fiscal Year	Additions	Reductions / Repayments	Debt at End of Fiscal Year		
General Obligation Bonds/Notes – CIB	07/2015	8,295,000.00		5,000.00	8,290,000.00	129,025.00	238,150.02
General Obligation Bonds/Notes – CIB	07/2015	3,760,000.00		515,000.00	3,245,000.00	595,725.00	71,225.00
General Obligation Bonds/Notes – CIB	08/2014	2,930,000.00		335,000.00	2,595,000.00	373,071.88	68,843.76
General Obligation Bonds/Notes – CIB	11/2013	6,090,000.00		700,000.00	5,390,000.00	839,037.50	144,037.50
Compensated Absences		577,305.00	100,953.00		678,258.00		
Other Post-Employment Benefits (OPEB)		291,635.00	704,195.00	367,501.00	628,329.00		
Net Pension Liability		34,609,000.00	4,838,000.00		39,447,000.00		
Totals for Debt Entered:		\$56,552,940.00	\$5,643,148.00	\$1,922,501.00	\$60,273,587.00	\$1,936,859.38	\$522,256.28

LEA : 108051003 Bedford Area SD

Printed 11/21/2017 9:27:17 AM

General Fund (10)

Section 1: Tuition/Purchased Services as Reported within Expenditure Detail	Amount
Tuition Reported in General Fund Expenditures 1000-560	3,246,232.76
Purchased Services in General Fund Expenditures 1000-594 and 1000-597	591.85
Section 1 Total	\$3,246,824.61

Section 2: Tuition Paid to Institution Types During Fiscal Year	Tuition Paid For Nonspecial Education	Tuition Paid For Special Education	Total
1 1306 Institutions	13,901.47	67,314.01	81,215.48
2 Institutionalized Children's Programs	295.92	295.93	591.85
3 Juveniles Incarcerated in Adult Facilities	27,218.16		27,218.16
4 Residential Treatment Facilities			
5 Other Local Education Agencies		90,989.13	90,989.13
6 Brick and Mortar Charter Schools	1,976,121.99	352,430.88	2,328,552.87
7 Cyber Charter Schools	168,098.05	27,805.65	195,903.70
8 Career and Technology Centers	515,621.75		515,621.75
9 Approved Private Schools		6,731.67	6,731.67
10 PA Chartered Schools for the Deaf and Blind			
11 Private Residential Rehabilitative Institutions			
12 Juvenile Detention Centers			
13 Special Program Jointures			
14 Other Tuition Not Included Elsewhere In This Section			
Section 2 Total	\$2,701,257.34	\$545,567.27	\$3,246,824.61

1 .	<u>Student Transportation Services for Educational Field Trips</u>	1,798.68
2 .	<u>Student Transportation Services for Student Activities</u>	8,536.70
3 .	<u>Rental of Vehicles for Student Transportation Services</u>	
4 .	<u>Capital Reserve Funds</u>	

Include only district-owned transportation expenditures paid from State or local money.
DO NOT include federal expenditures or payments to contract service providers.
Contracted transportation services should not be recorded on this schedule.

LEA : 108051003 Bedford Area SD

Printed 11/21/2017 9:27:19 AM

Food Service / Cafeteria Operations Fund (51)

3000 Operation of Non-Instructional Services

Total

100 <u>Personnel Services – Salaries</u>	
100 Personnel Services – Salaries	387,728.00
Total Personnel Services – Salaries	\$387,728.00
200 <u>Personnel Services – Employee Benefits</u>	
210 Group Insurance – Contracted Provider	162,906.00
220 Social Security Contributions	26,277.00
230 PSERS Retirement Contributions	114,414.00
260 Workers’ Compensation	2,637.00
292 Health Savings Accounts	36,561.00
Total Personnel Services – Employee Benefits	\$342,795.00
400 <u>Purchased Property Services</u>	
430 Repairs and Maintenance Services	7,756.00
Total Purchased Property Services	\$7,756.00
500 <u>Other Purchased Services</u>	
599 Other Miscellaneous Purchased Services	3,366.00
Total Other Purchased Services	\$3,366.00
600 <u>Supplies</u>	
610 General Supplies	31,058.00
630 Food	442,253.00
Total Supplies	\$473,311.00
700 <u>Property</u>	
740 Depreciation	6,615.00
Total Property	\$6,615.00
800 <u>Other Objects</u>	
810 Dues and Fees	510.00
890 Miscellaneous Expenditures	1,439.00
Total Other Objects	\$1,949.00
Total 3000 Operation of Non-Instructional Services	\$1,223,520.00

LEA : 108051003 Bedford Area SD

Printed 11/21/2017 9:27:19 AM

Food Service / Cafeteria Operations Fund (51)

3100 Food Services	<u>Elementary</u>	<u>Secondary</u>	<u>Federal</u>	<u>Total</u>
100 <u>Personnel Services – Salaries</u>				
100 Personnel Services – Salaries				387,728.00
Total Personnel Services – Salaries				\$387,728.00
200 <u>Personnel Services – Employee Benefits</u>				
210 Group Insurance – Contracted Provider				162,906.00
220 Social Security Contributions				26,277.00
230 PSERS Retirement Contributions				114,414.00
260 Workers' Compensation				2,637.00
292 Health Savings Accounts				36,561.00
Total Personnel Services – Employee Benefits				\$342,795.00
400 <u>Purchased Property Services</u>				
430 Repairs and Maintenance Services				7,756.00
Total Purchased Property Services				\$7,756.00
500 <u>Other Purchased Services</u>				
599 Other Miscellaneous Purchased Services				3,366.00
Total Other Purchased Services				\$3,366.00
600 <u>Supplies</u>				
610 General Supplies				31,058.00
630 Food				442,253.00
Total Supplies				\$473,311.00
700 <u>Property</u>				
740 Depreciation				6,615.00
Total Property				\$6,615.00
800 <u>Other Objects</u>				
810 Dues and Fees				510.00
890 Miscellaneous Expenditures				1,439.00
Total Other Objects				\$1,949.00
Total 3100 Food Services				\$1,223,520.00

	<u>Food Service(51)</u>	<u>Child Care Operations(52)</u>	<u>Other Enterprise(58)</u>	<u>Internal Service(60)</u>	<u>Total</u>
3000 <u>Operation of Non-Instructional Services</u>					
3100 Food Services	1,223,520.00				1,223,520.00
Total Operation of Non-Instructional Services	\$1,223,520.00				\$1,223,520.00
TOTAL ACTUAL EXPENDITURES & OTHER FINANCING USES	\$1,223,520.00				\$1,223,520.00